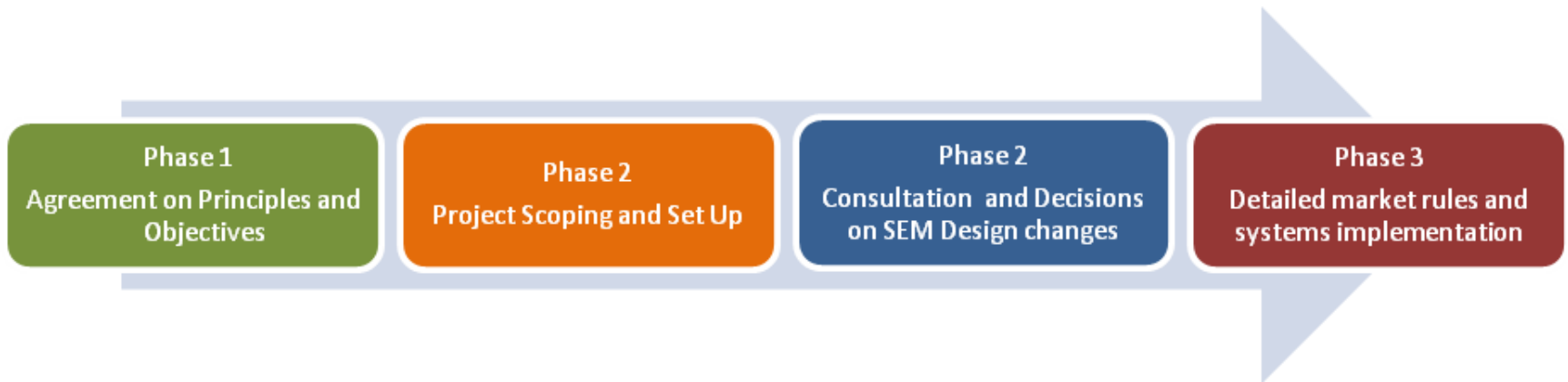


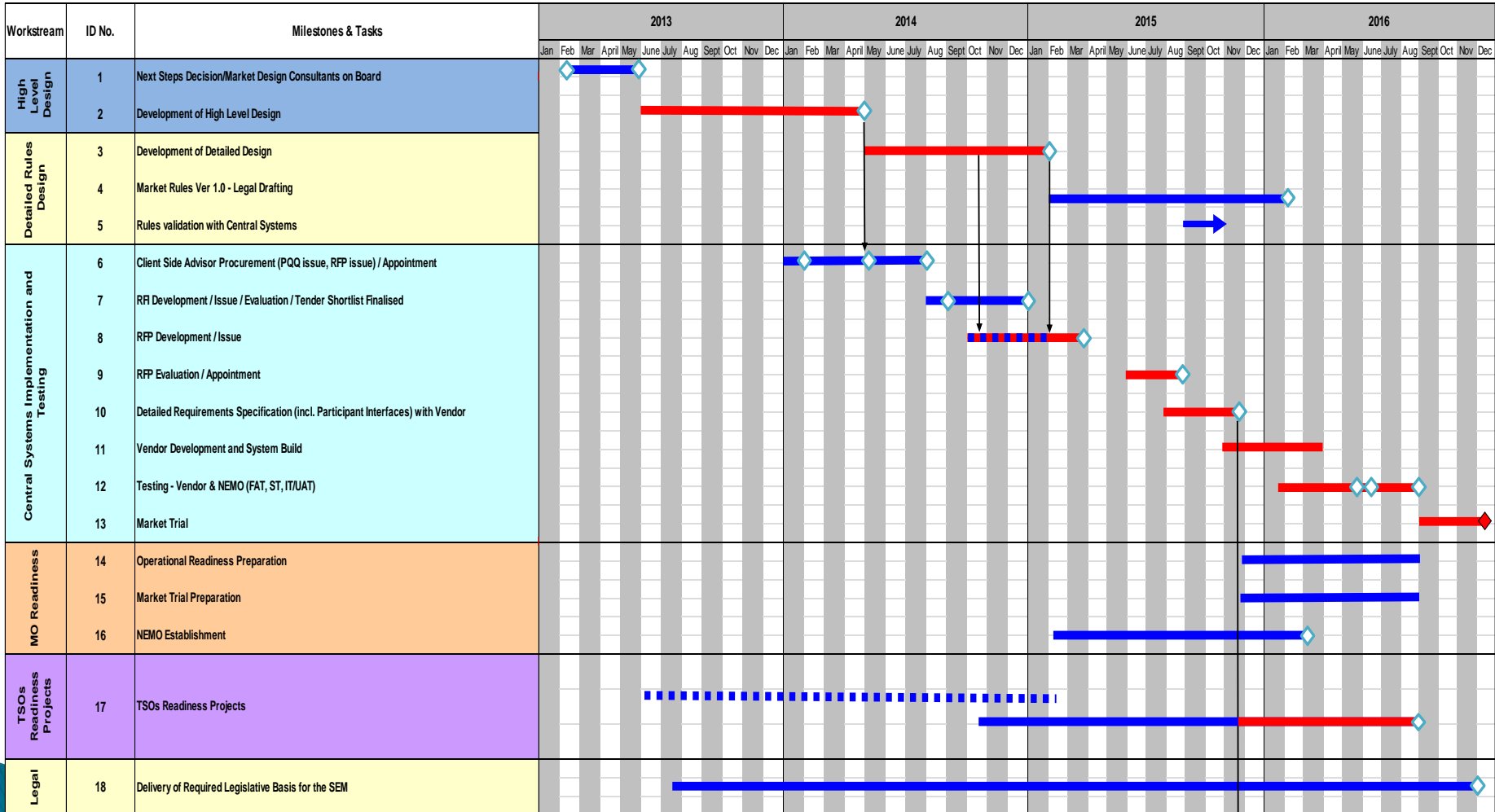
Implementing Target Model in SEM

Next Steps

4 April 2013



High Level Milestones



and Project Timelines

▶ Key Project Timings 2013

- **7 February:** SEM Committee Decision
- **8 February:** Departments approve recommendations
- **22 March:** Tenders for market design and project management support published in OJEU
- **April – June:** Project Office establishment and governance arrangements in place
- **April – June:** Stakeholder engagement
- **May:** Engage with Ofgem, ACER and EC on ‘Roadmap to 2016’
- **June:** Consultants on board
- **Q3 2013:** High Level Design Consultation
- **Q2 2014:** High Level Design Decision