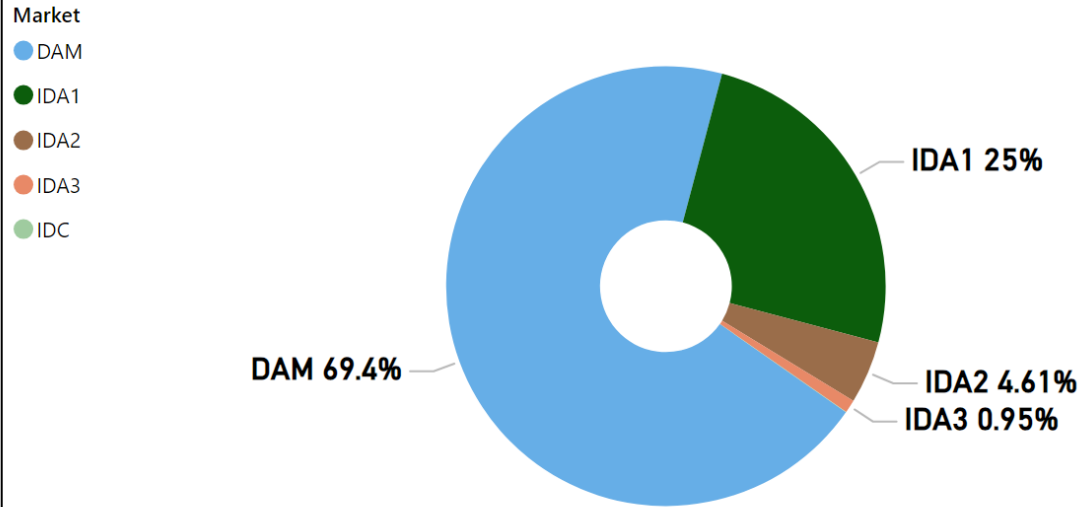


MMU Weekly Market Summary Report

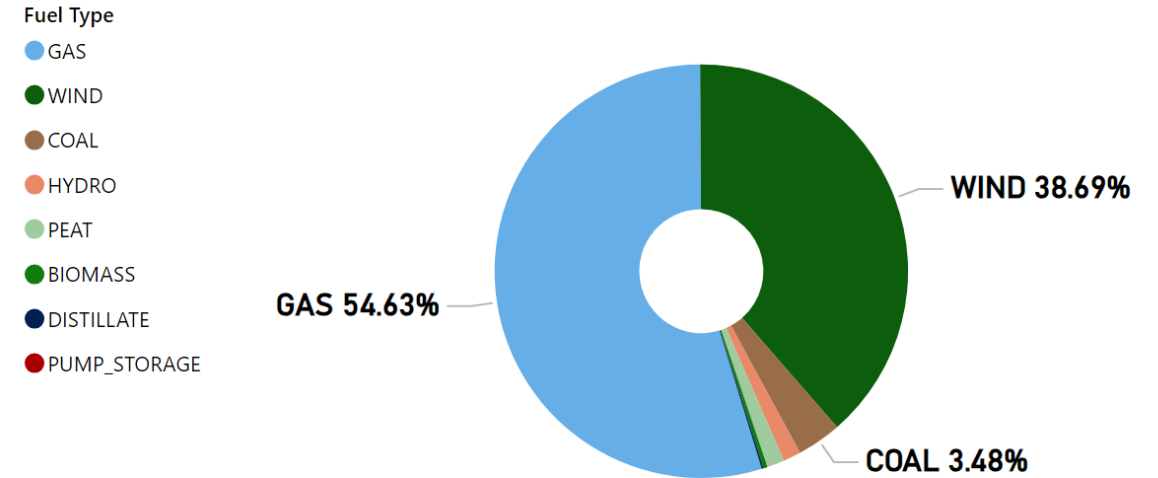
- Week Commencing 27 January 2025

Weekly Volume by Market



Source: SEMO PX

Weekly Fuel Mix



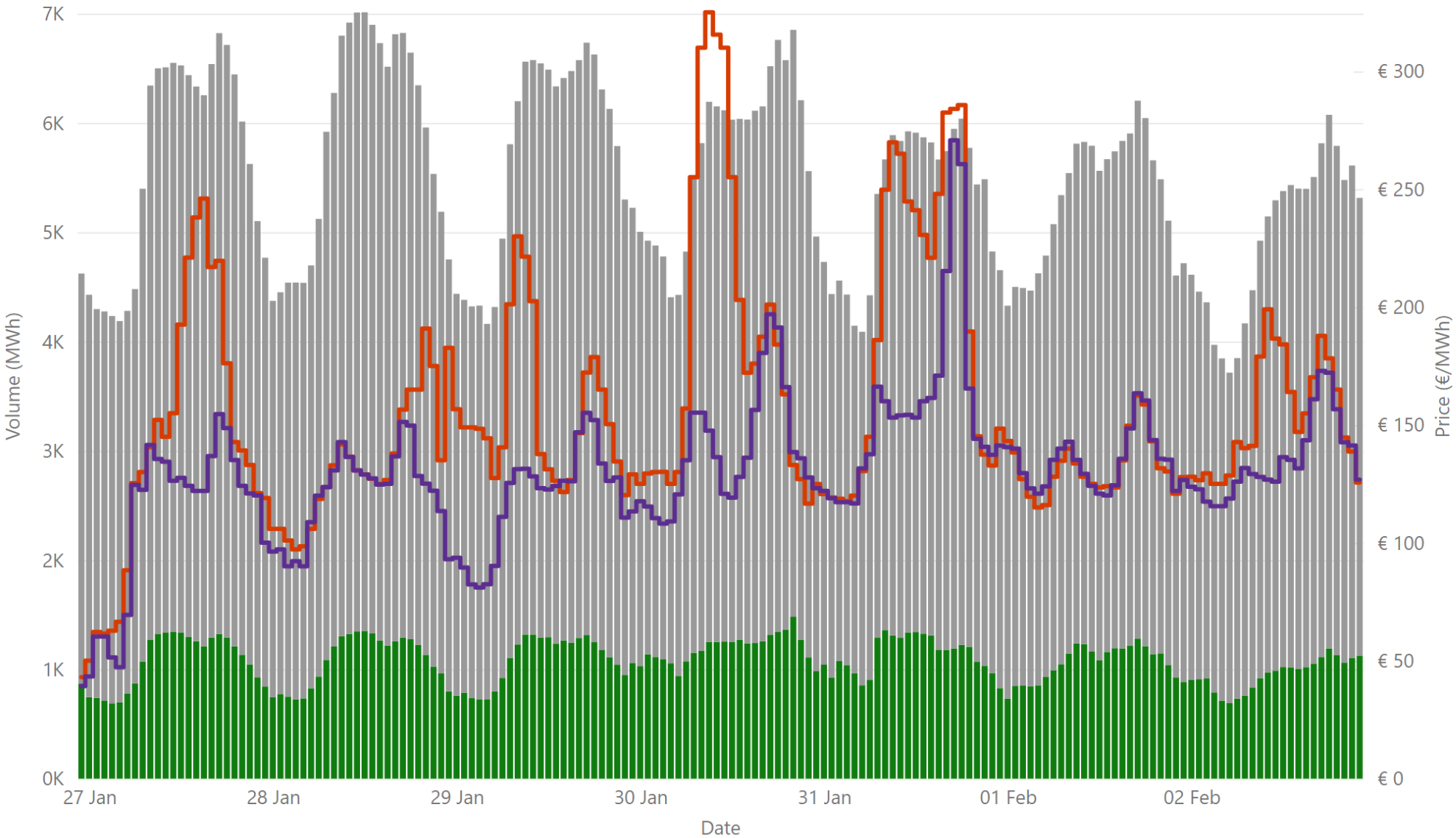
Source: SEMO PX

Summary Table

Date	Daily System Demand (MWh)*	Daily DAM Price (€/MWh)**	Daily Actual Wind (MWh)*	Daily Average Gas Price (p/th)***	Daily Average Coal Price (€/t)***	Daily Average Carbon Price (€/t)***
27 January 2025	125,387.25	147.68	44,223.75	122.00	109.10	77.12
28 January 2025	128,223.75	133.54	56,368.00	123.20	110.25	78.21
29 January 2025	130,073.00	157.97	36,037.00	131.60	109.95	80.85
30 January 2025	133,757.50	190.68	35,080.75	131.65	110.00	80.47
31 January 2025	128,870.50	198.77	29,495.25	133.00	110.50	81.63
01 February 2025	118,863.50	133.85	83,828.25	133.00	110.50	81.63
02 February 2025	113,073.25	153.73	39,485.50	133.00	110.50	81.63

Sources: *EirGrid **SEMO PX ***Oil Market Journal

Weekly Day Ahead Market Summary - Week Commencing 27 January 2025



€ 155.84
 Weekly Average SEM DAM Price*

129.98
 Weekly Average GB EPEX PRICE*

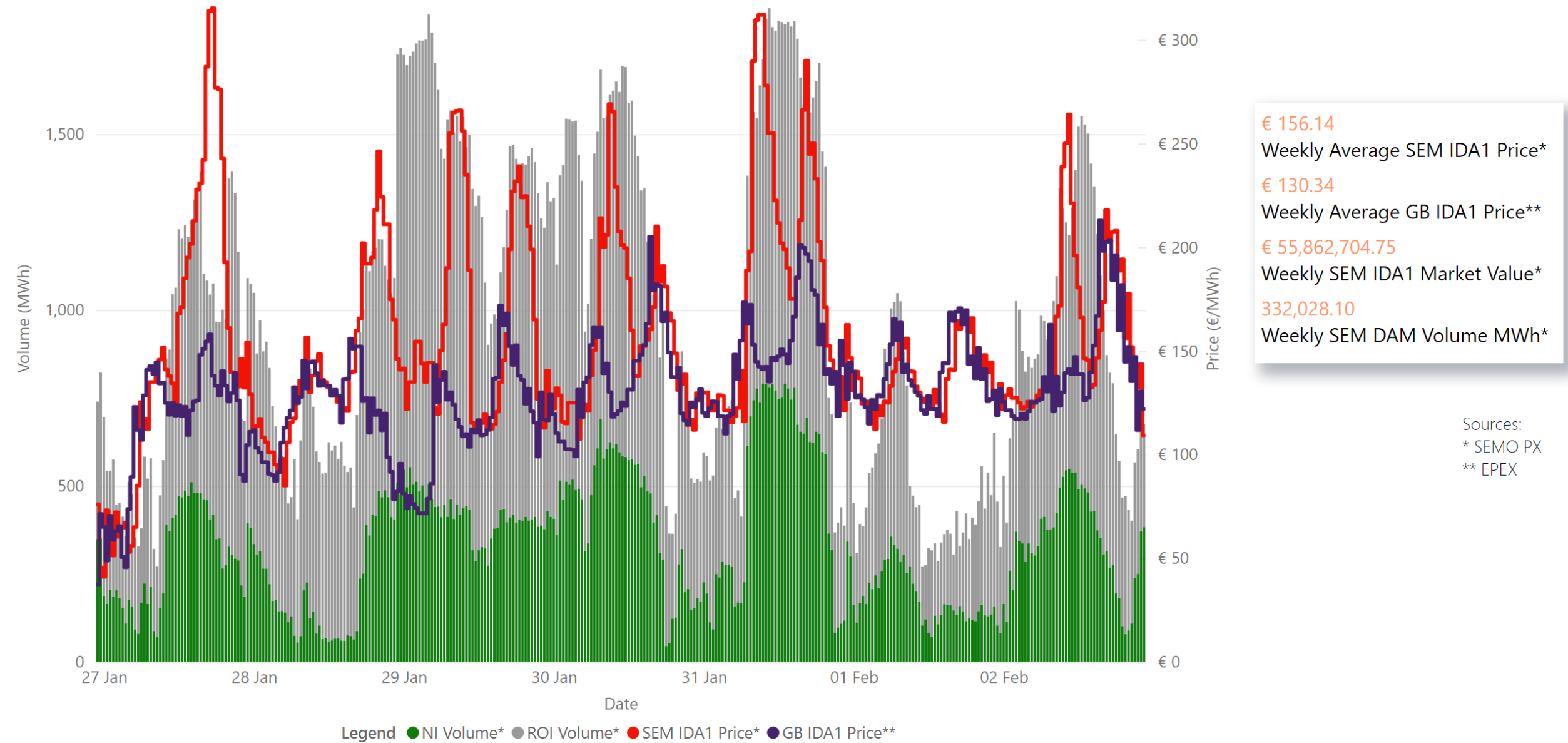
€ 146,857,779.94
 Weekly SEM DAM Market Value*

921,572.20
 Weekly SEM DAM Volume MWh*

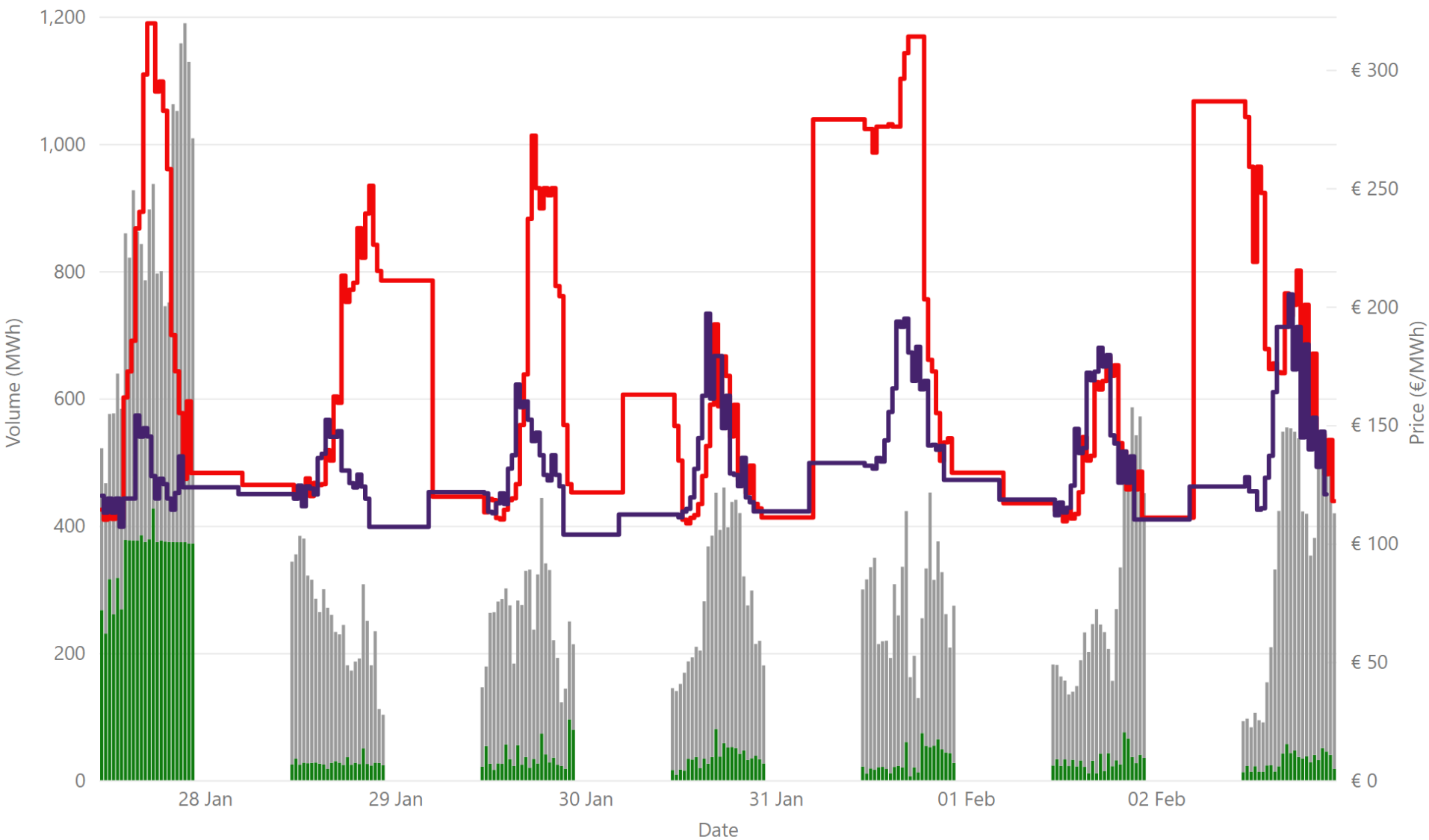
Sources:
 * SEMO PX
 ** EPEX
 *** Nordpool

Legend ● NI Volume* ● ROI Volume* ● SEM DAM Price* ● GB EPEX Price*

Weekly Intraday Auction 1 Summary - Week Commencing 27 January 2025



Weekly Intraday Auction 2 Summary - Week Commencing 27 January 2025

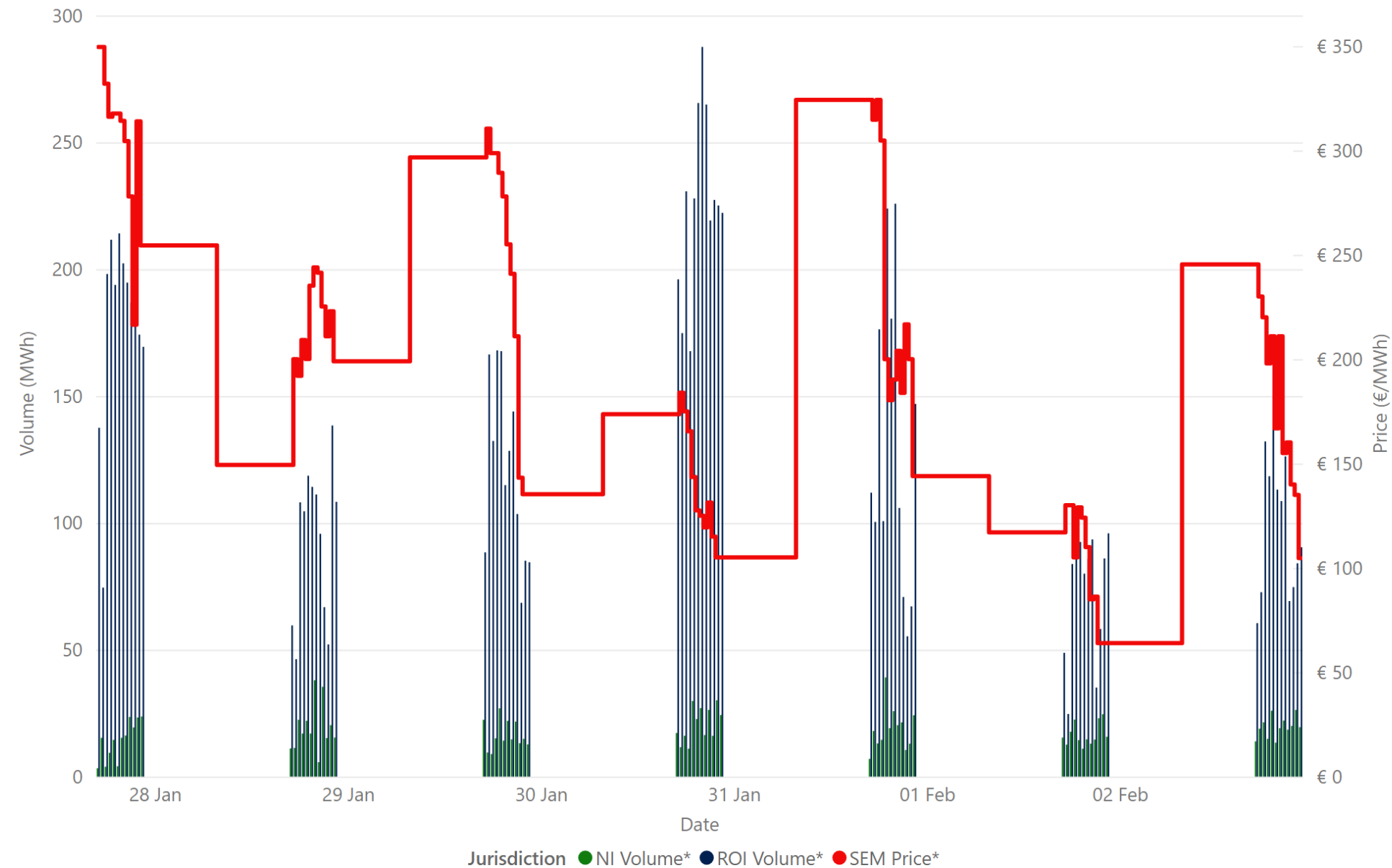


€ 178.00
 Weekly Average SEM IDA2 Price*
 € 138.38
 Weekly Average GB IDA2 Price**
 € 11,056,162.91
 Weekly SEM IDA2 Market Value*
 61,281.20
 Weekly SEM IDA2 Volume MWh*

Sources:
 * SEMO PX
 ** EPEX

Jurisdiction Volume ● NI Volume* ● ROI Volume* ● SEM IDA2 Price* ● GB Price**

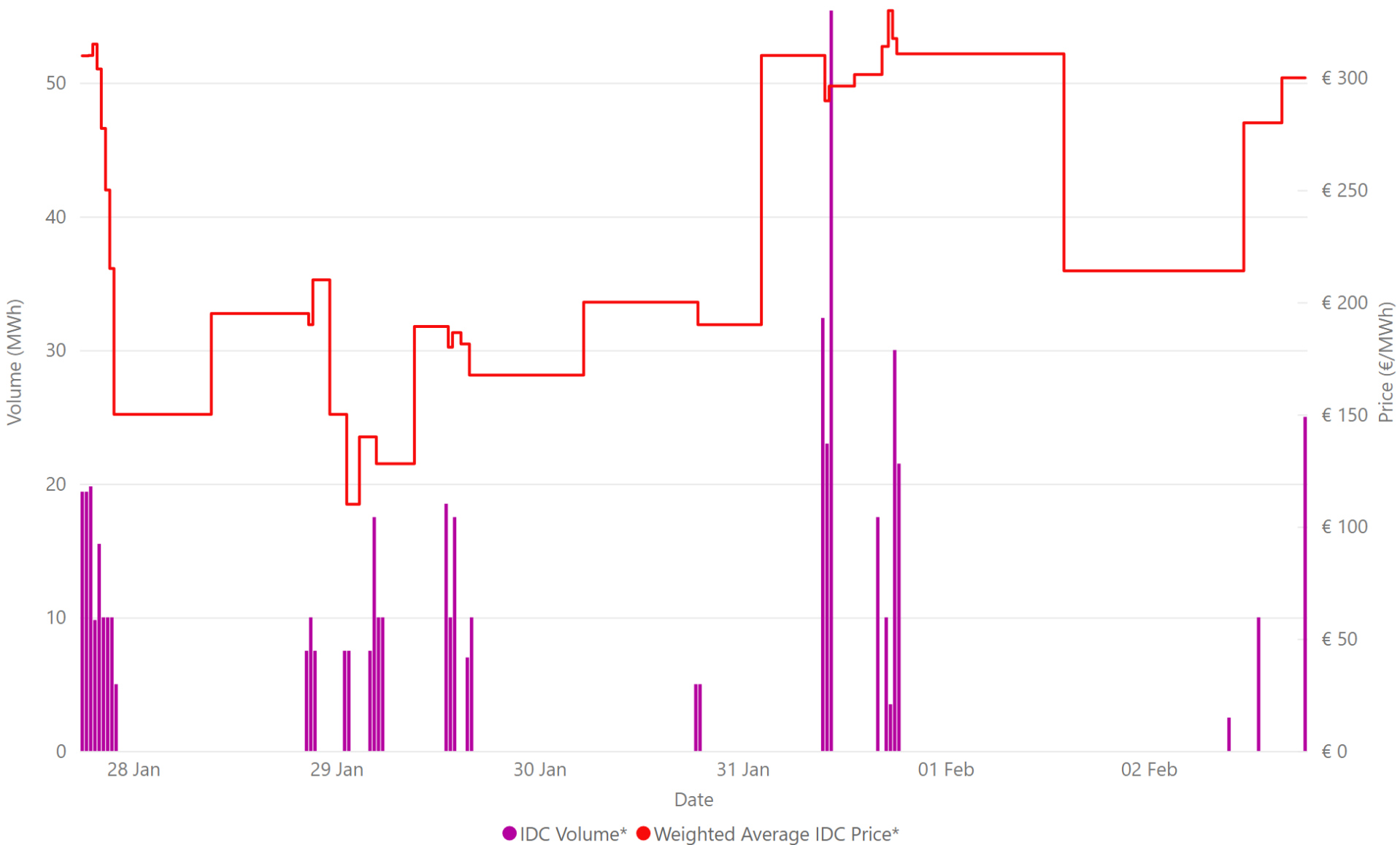
Weekly Intraday Auction 3 Summary - Week Commencing 27 January 2025



€ 201.54
 Weekly Average SEM IDA3 Price*
€ 2,593,702.57
 Weekly SEM IDA3 Market Value*
12,618.50
 Weekly SEM IDA3 Volume MWh*

Source: * SEMO PX

Weekly Intraday Continuous Summary - Week Commencing 27 January 2025



€ 233.07
Weekly SEM IDC Average Price*

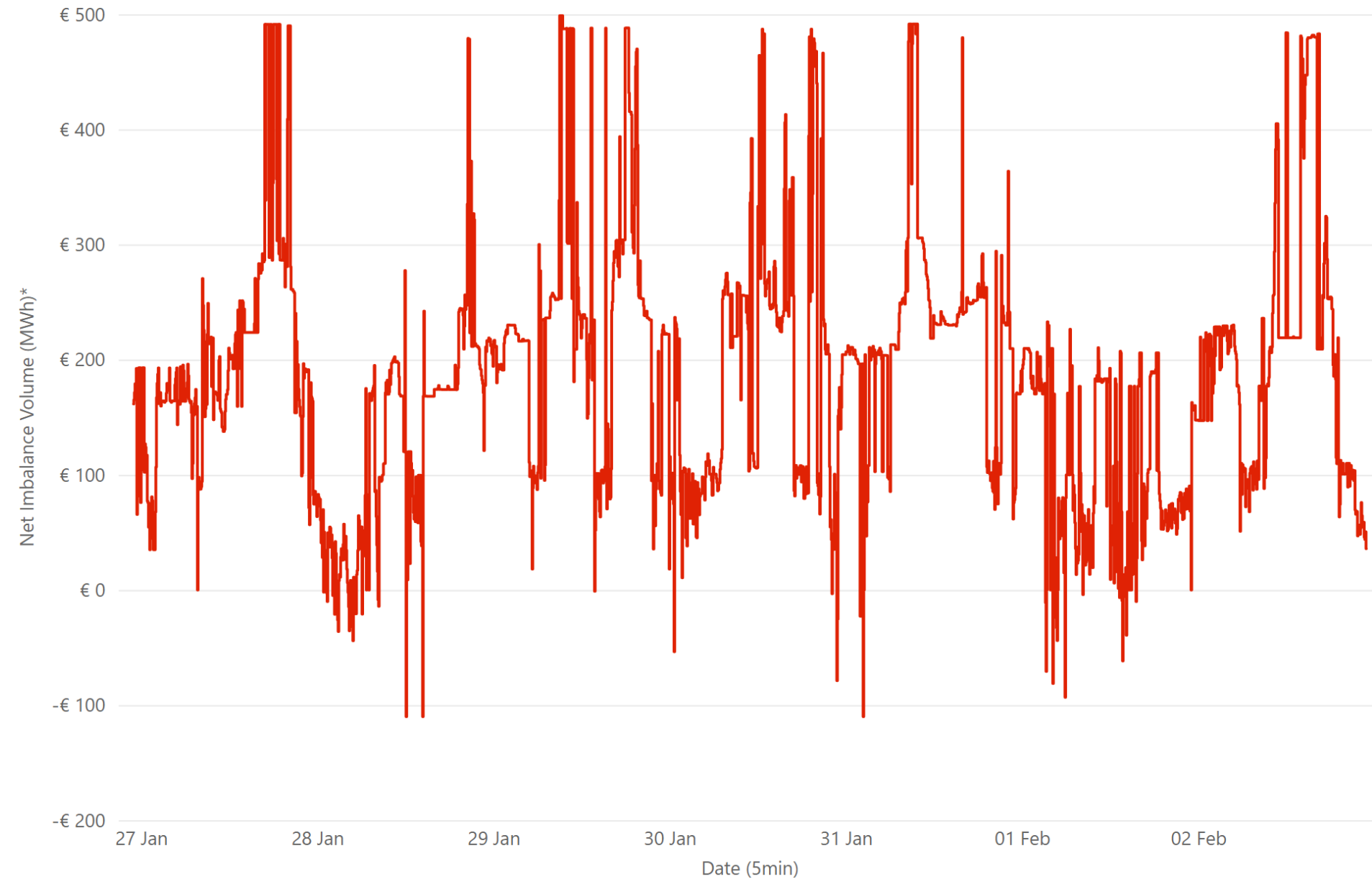
€ 330.00
Weekly SEM IDC Max Price*

€ 110.00
Weekly SEM IDC Min Price*

507.70
Weekly SEM IDC Volume MWh*

Source: * SEMO PX

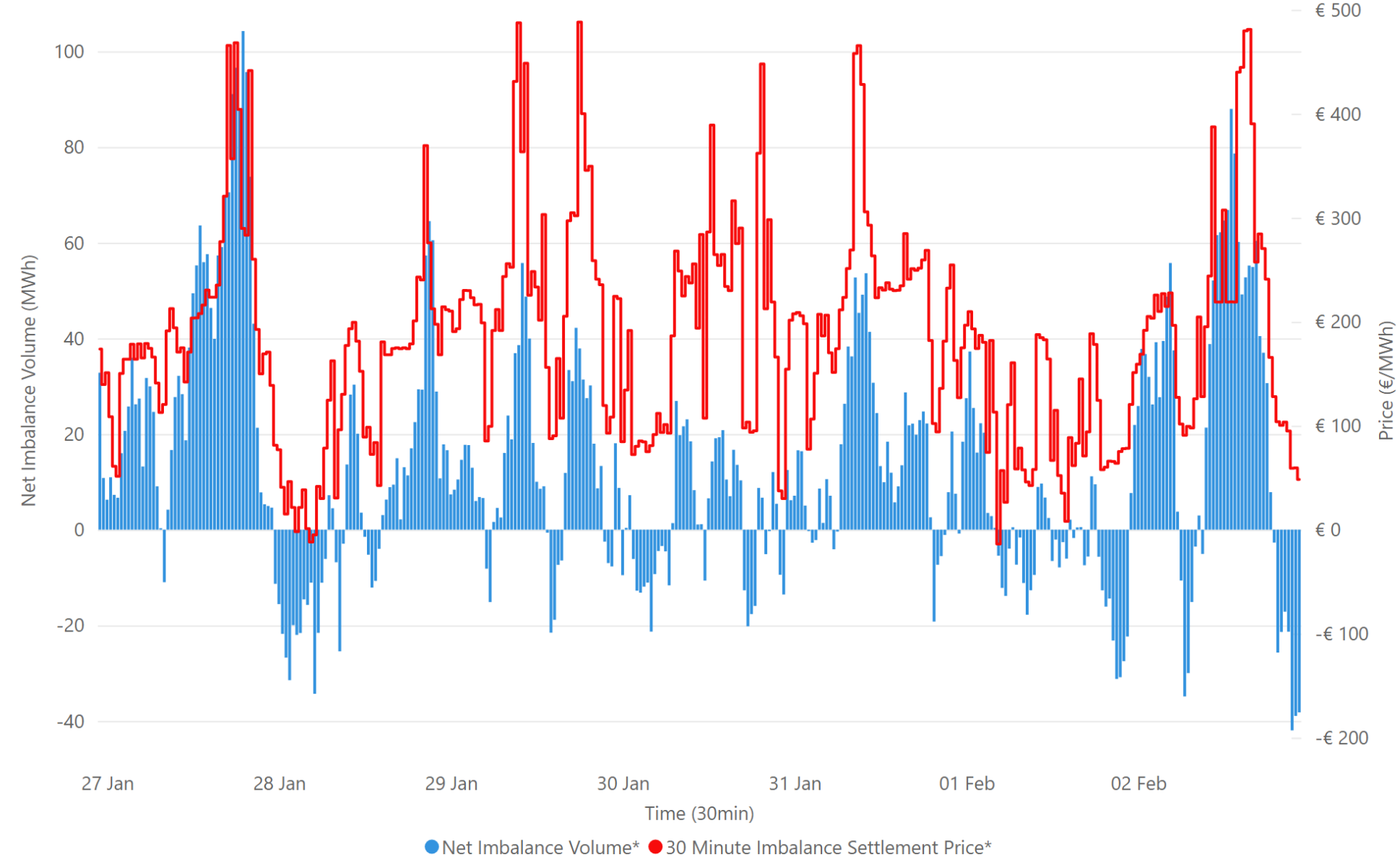
Weekly Balancing Market 5 Minute Summary - Week Commencing 27 January 2025



€ 184.64
Ave 5min Imbalance Price*
-€ 110.10
Min 5min Imbalance Price*
€ 498.76
Max 5min Imbalance Price*

Source: * SEMO

Weekly Balancing Market 30 Minute Summary - Week Commencing 27 January 2025



€ 184.64
Ave 30min Imbalance Price*

€ 488.06
Max 30min Imbalance Price*

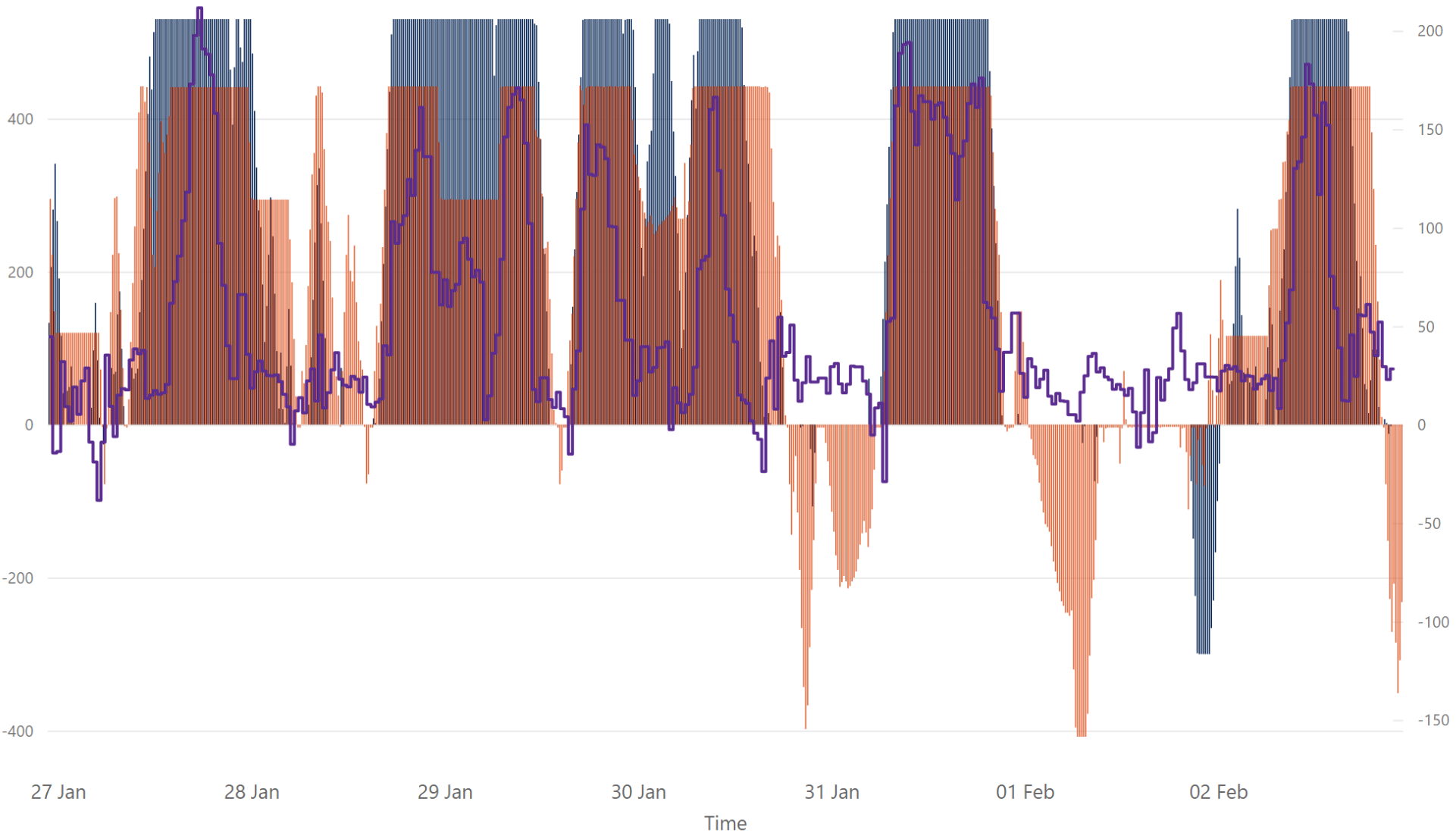
-€ 13.79
Min 30min Imbalance Price*

104.26
Max Net Imbalance Volume*

-41.97
Min Net Imbalance Volume*

Source: * SEMO

Weekly Interconnection Summary - Week Commencing 27 January 2025



163,670.00
Weekly MOYLE (MW) Import*
-17,208.00
Weekly MOYLE (MW) Export*
146,462.00
Weekly MOYLE (MW) NET*
169,958.00
Weekly EWIC (MW) Import*
-3,697.00
Weekly EWIC (MW) Export*
166,261.00
Weekly EWIC (MW) NET*

Sources:
 * EirGrid
 ** SEMO, EPEX & Nordpool

● EWIC Volume (MW)* ● MOYLE Volume (MW)* ● SEM-GB Spread**

Weekly Wind Capacity Summary - Week Commencing 27 January 2025



4224
Max Actual Wind (MW)*
73
Min Actual Wind (MW)*
4744
Max Forecast Wind (MW)*
110
Min Forecast Wind (MW)*

Sources:
* EirGrid

● 15 Minute Forecast Wind (MW)* ● 15 Minute Actual Wind (MW)*