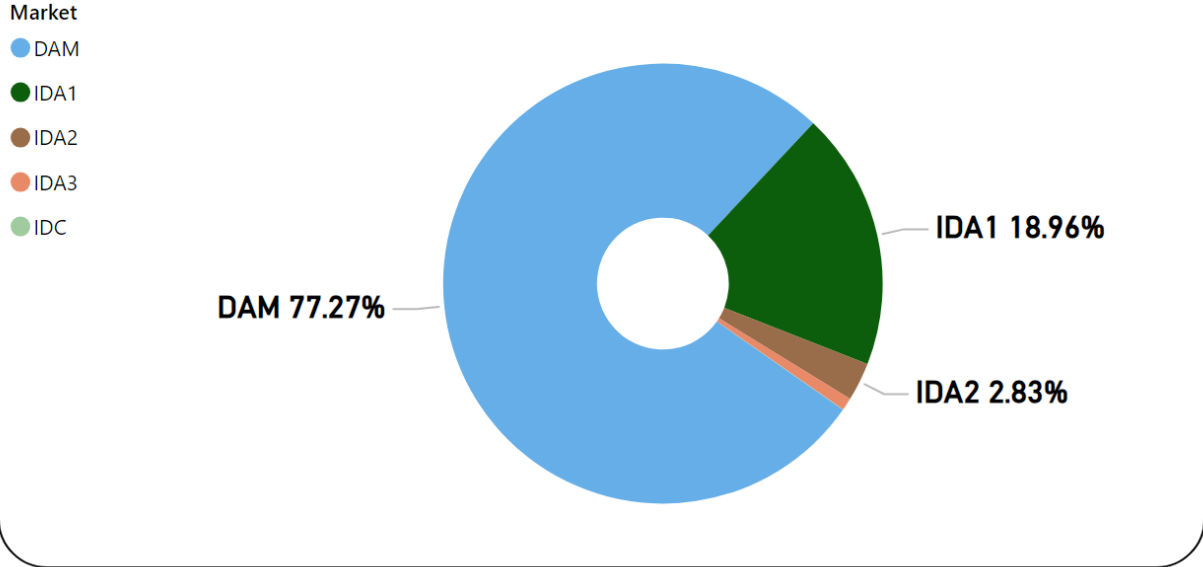


MMU Weekly Market Summary Report

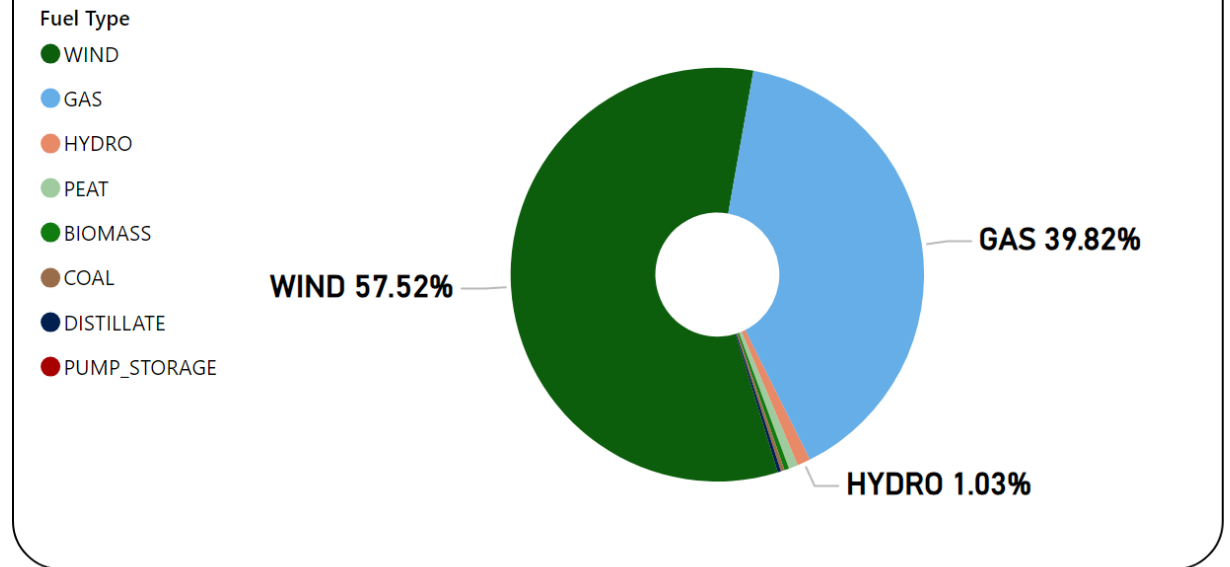
- Week Commencing 16 December 2024

Weekly Volume by Market



Source: SEMO PX

Weekly Fuel Mix



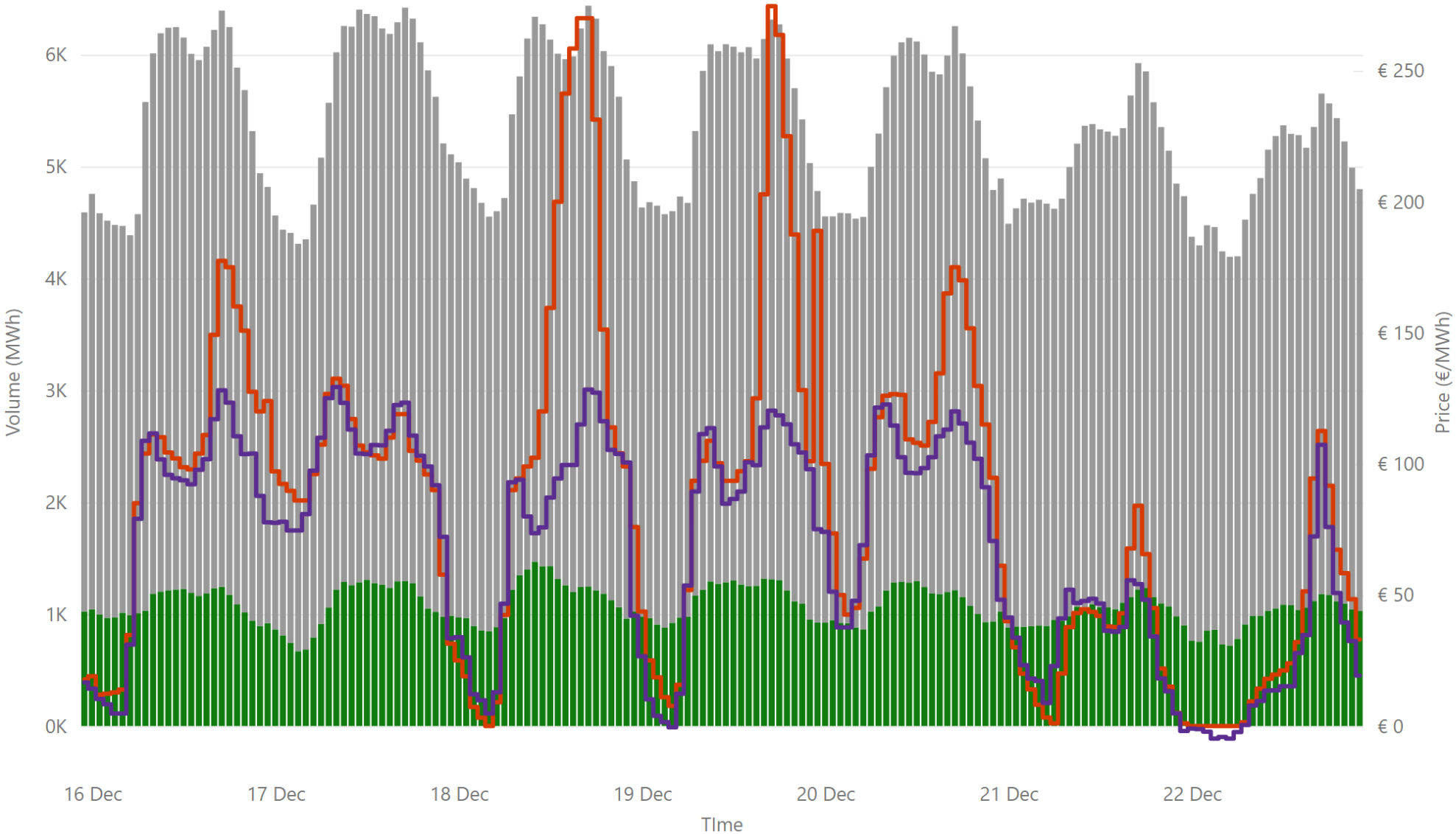
Source: SEMO PX

Summary Table

Date	Daily System Demand (MWh)*	Daily DAM Price (€/MWh)**	Daily Actual Wind (MWh)*	Daily Average Gas Price (p/th)***	Daily Average Coal Price (€/t)***	Daily Average Carbon Price (€/t)***
16 December 2024	124,485.75	97.92	57,529.50	97.55	111.30	63.30
17 December 2024	125,843.75	105.28	85,136.75	100.00	111.75	62.45
18 December 2024	124,980.25	122.57	51,955.00	99.03	111.40	62.91
19 December 2024	127,836.50	112.78	59,262.25	105.40	111.50	65.86
20 December 2024	122,367.00	116.85	66,688.25	108.53	111.85	65.59
21 December 2024	113,903.75	35.90	86,017.50	108.53	111.85	65.59
22 December 2024	113,544.50	31.59	79,094.50	108.53	111.85	65.59

Sources: * EirGrid ** SEMO PX *** Oil Market Journal

Weekly Day Ahead Market Summary - Week Commencing 16 December 2024

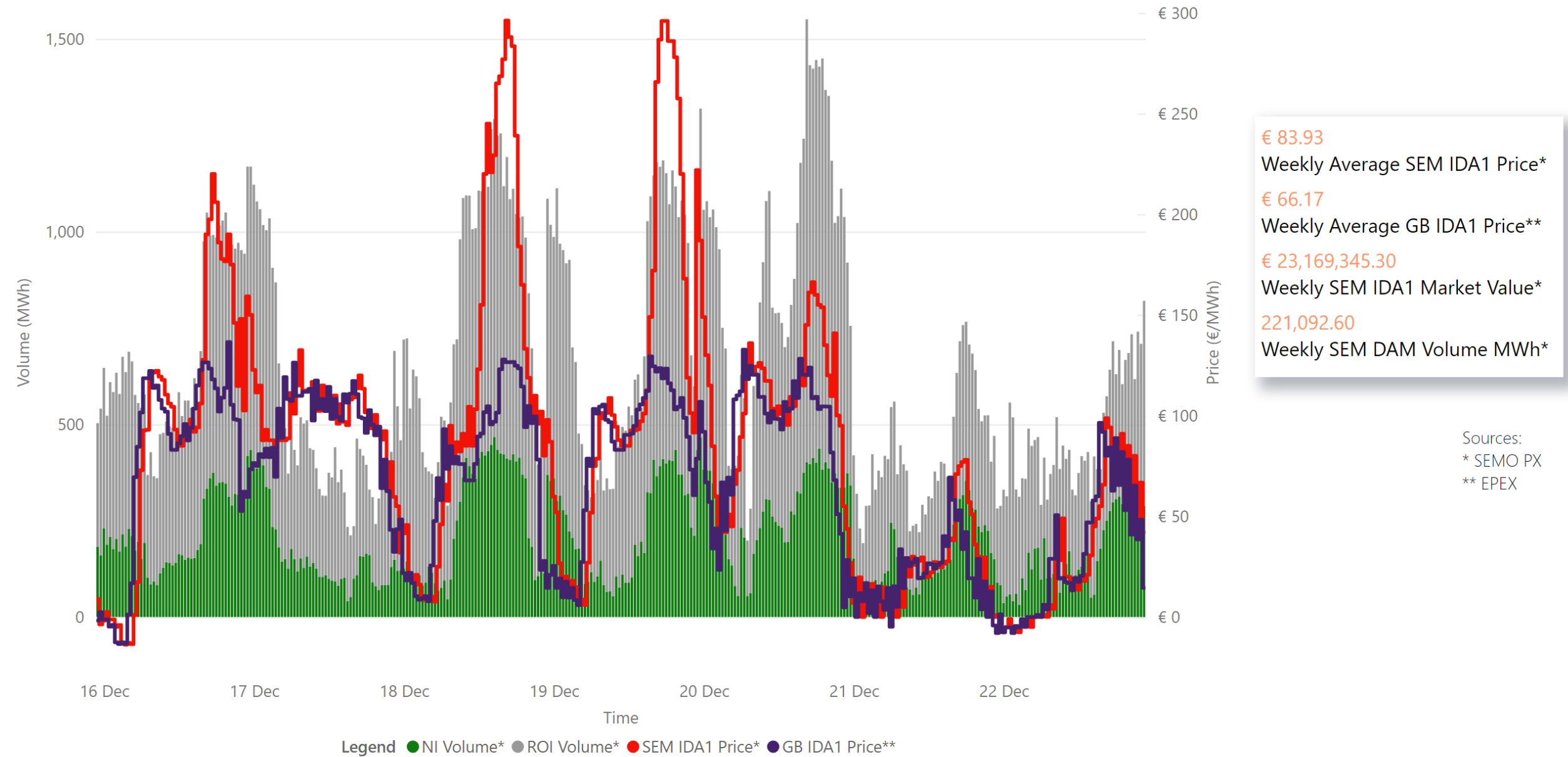


€ 84.89
 Weekly Average SEM DAM Price*
67.64
 Weekly Average GB EPEX PRICE*
€ 81,533,997.02
 Weekly SEM DAM Market Value*
901,208.20
 Weekly SEM DAM Volume MWh*

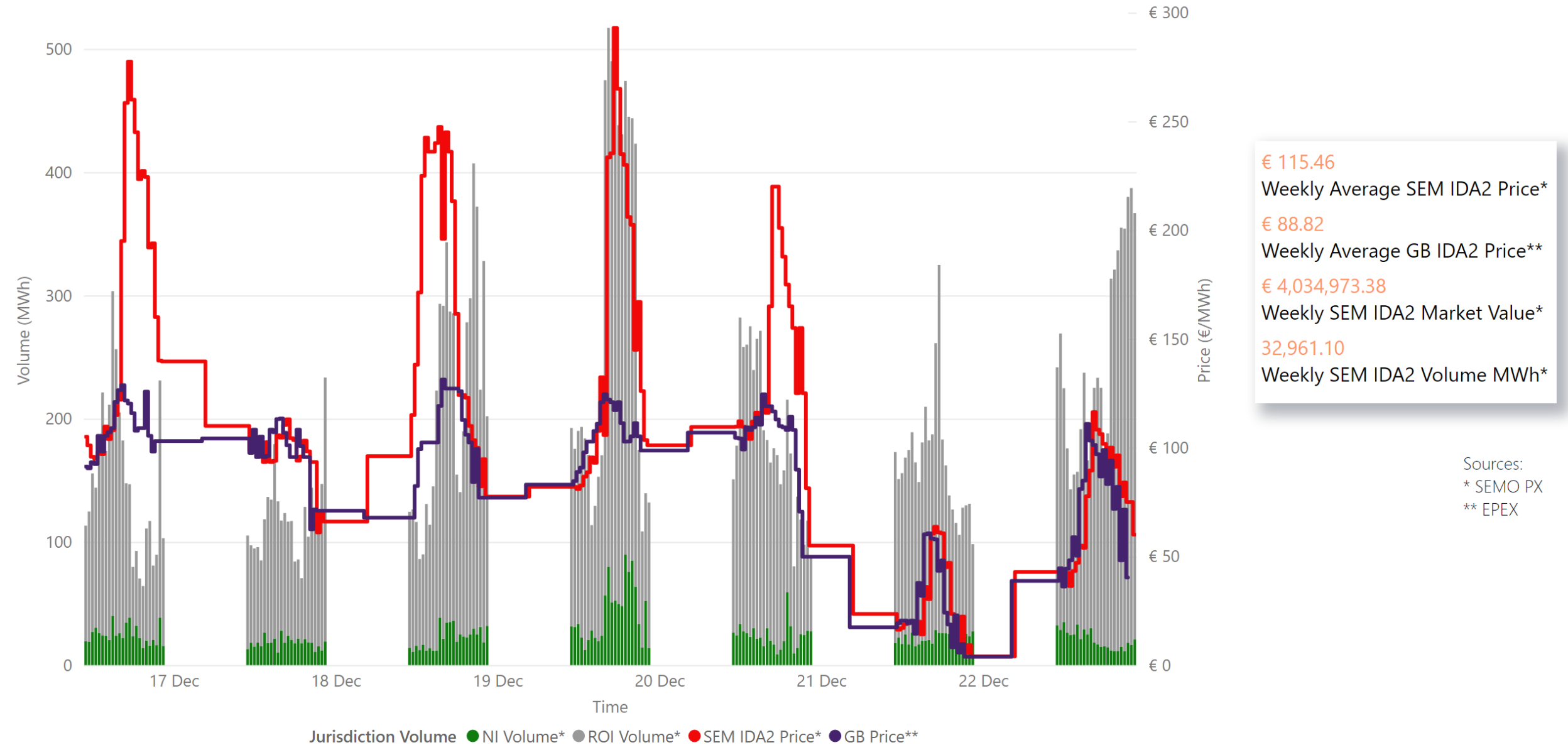
Sources:
 * SEMO PX
 ** EPEX
 *** Nordpool

Legend ● NI Volume* ● ROI Volume* ● SEM DAM Price* ● GB EPEX Price*

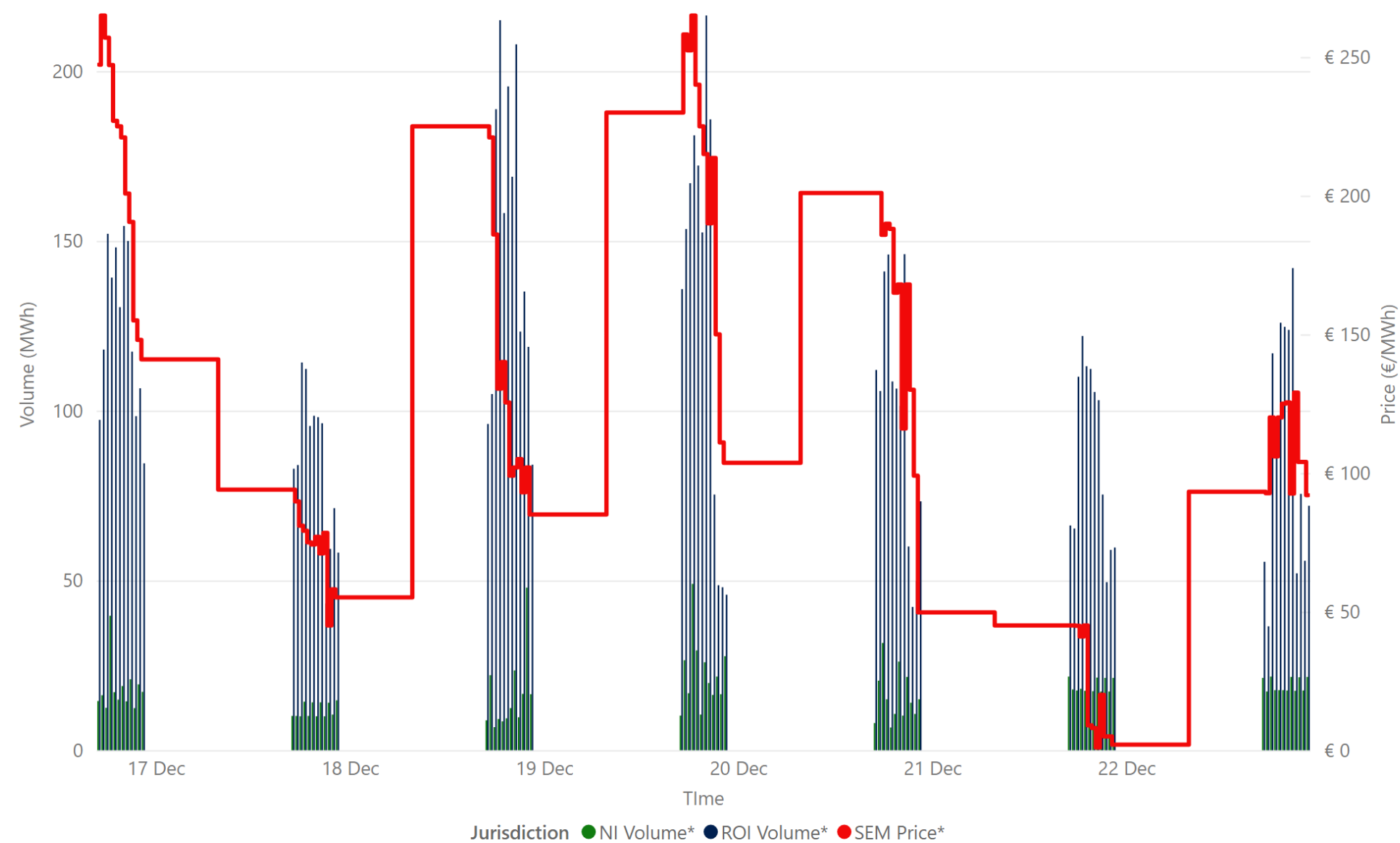
Weekly Intraday Auction 1 Summary - Week Commencing 16 December 2024



Weekly Intraday Auction 2 Summary - Week Commencing 16 December 2024



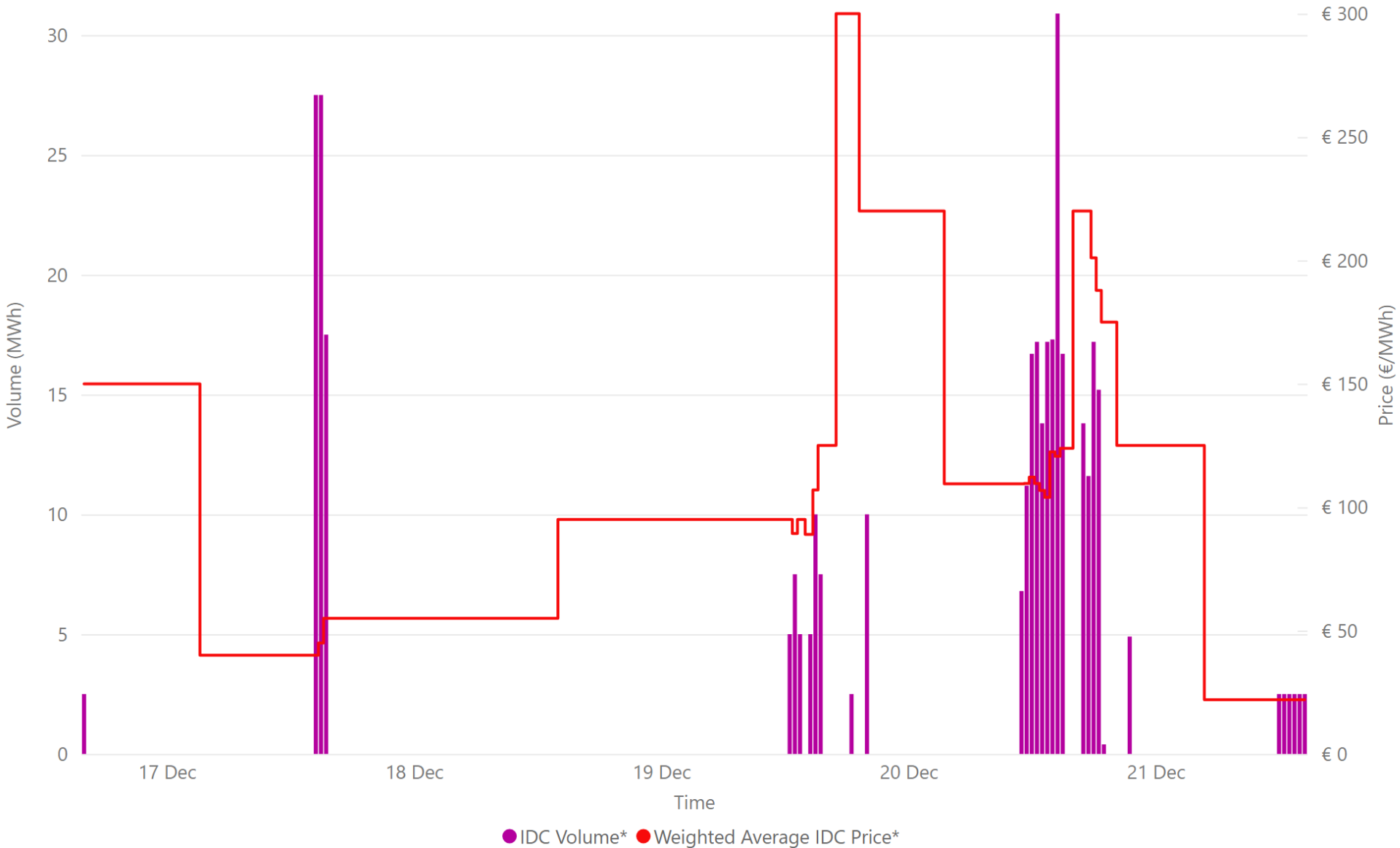
Weekly Intraday Auction 3 Summary - Week Commencing 16 December 2024



€ 129.84
Weekly Average SEM IDA3 Price*
€ 1,521,586.30
Weekly SEM IDA3 Market Value*
10,668.40
Weekly SEM IDA3 Volume MWh*

Source: * SEMO PX

Weekly Intraday Continuous Summary - Week Commencing 16 December 2024



€ 111.80
Weekly SEM IDC Average Price*

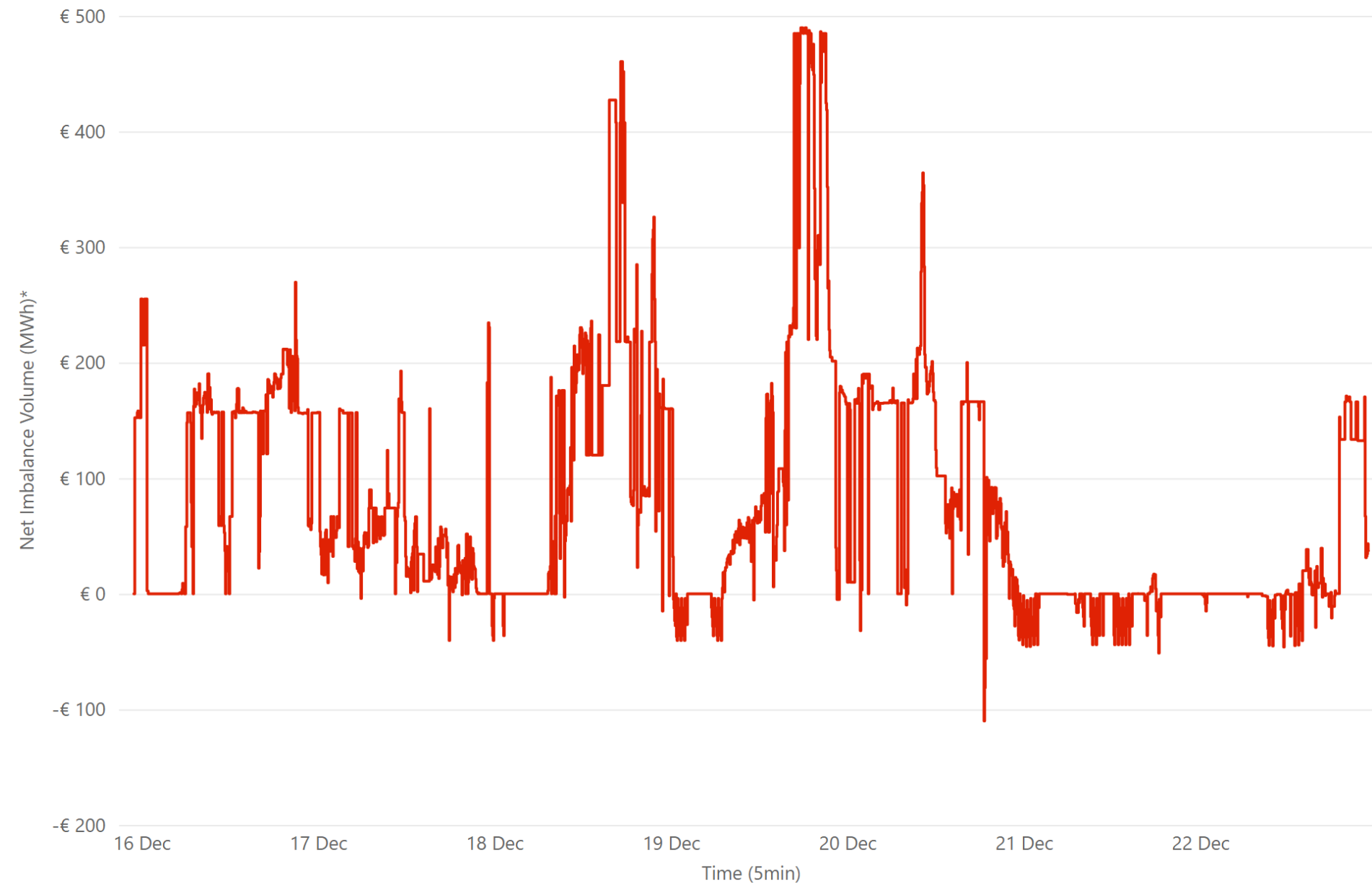
€ 300.00
Weekly SEM IDC Max Price*

€ 22.00
Weekly SEM IDC Min Price*

353.40
Weekly SEM IDC Volume MWh*

Source: * SEMO PX

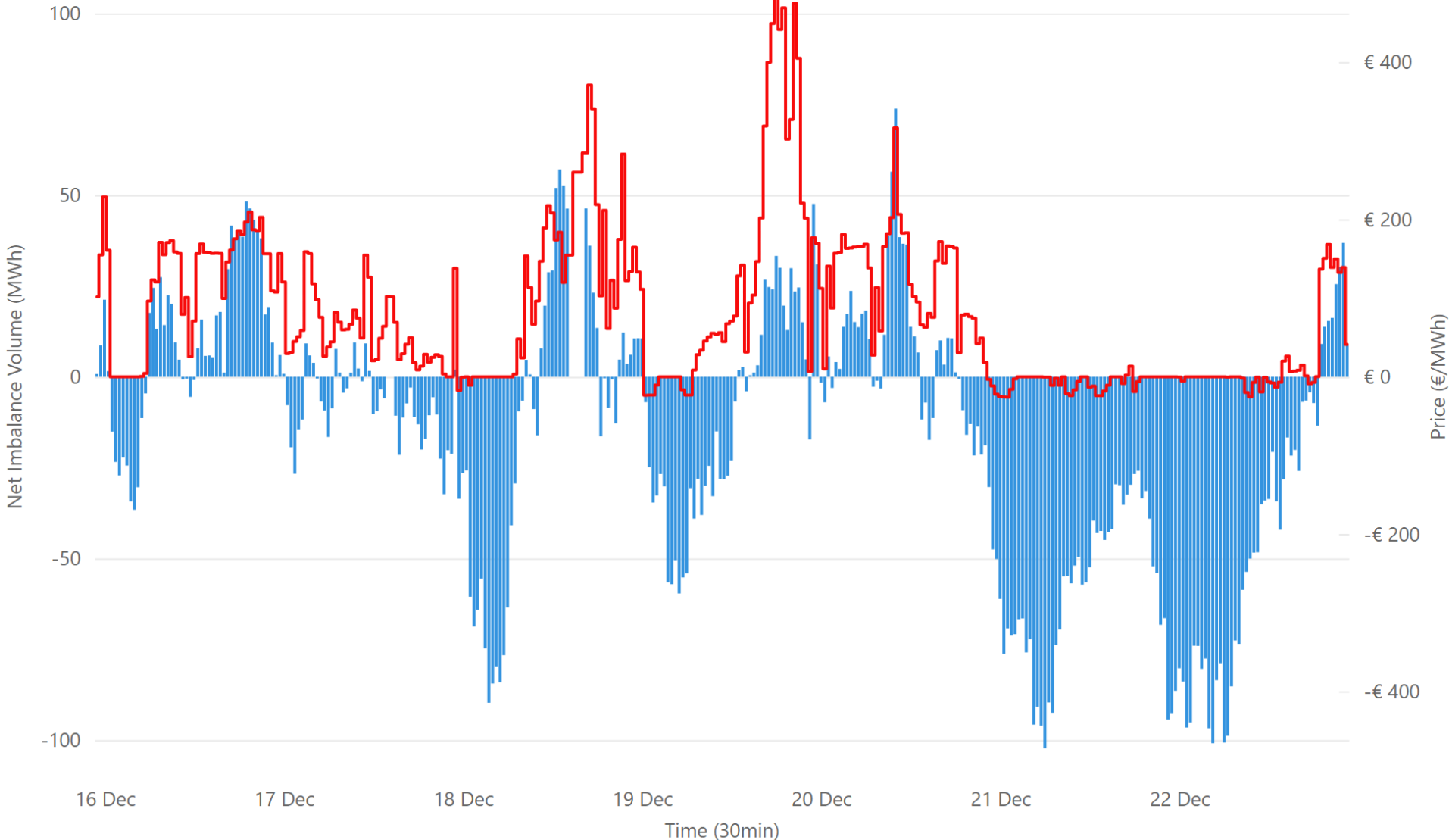
Weekly Balancing Market 5 Minute Summary - Week Commencing 16 December 2024



€ 78.10
Ave 5min Imbalance Price*
-€ 110.00
Min 5min Imbalance Price*
€ 489.64
Max 5min Imbalance Price*

Source: * SEMO

Weekly Balancing Market 30 Minute Summary - Week Commencing 16 December 2024

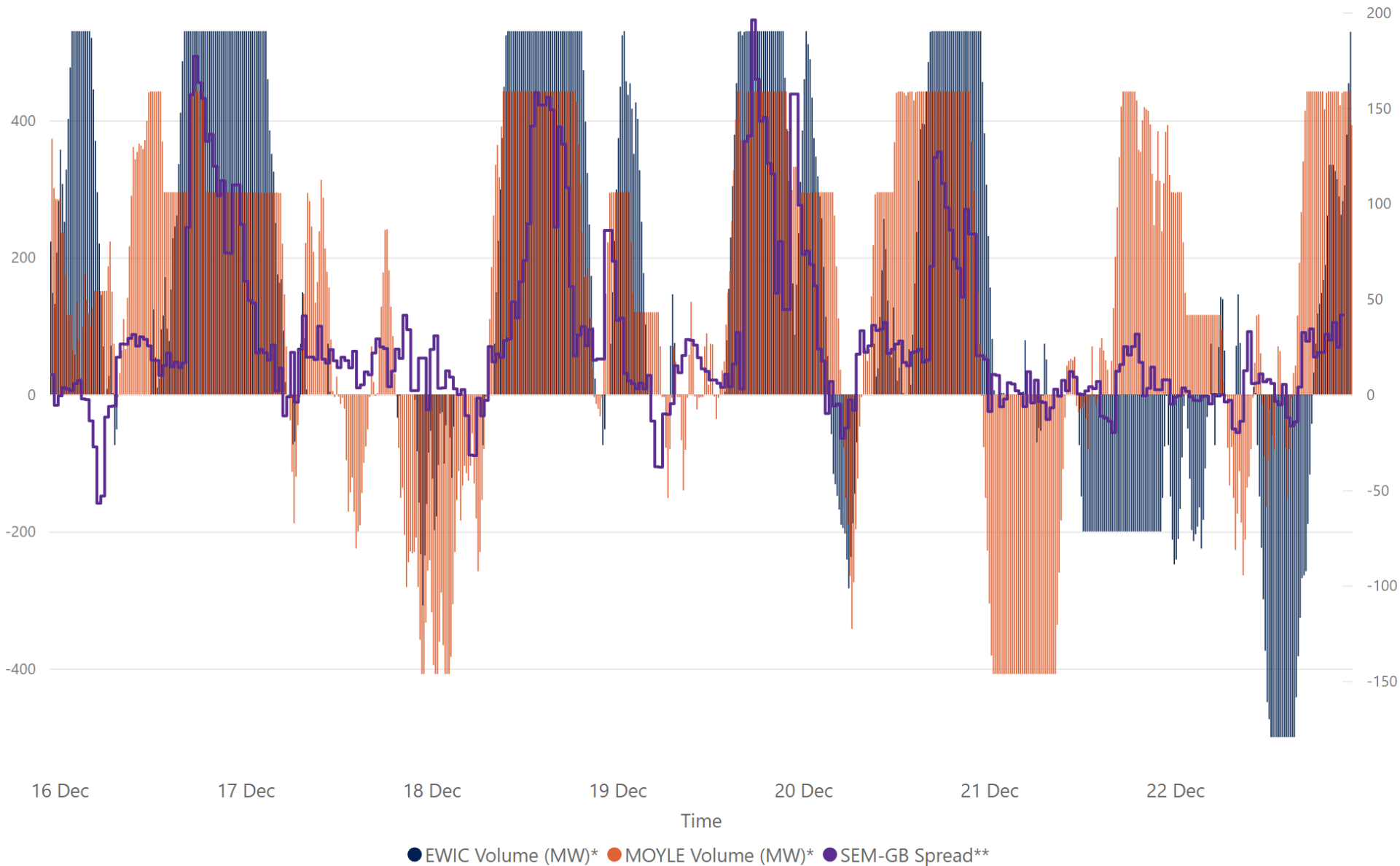


€ 78.66
Ave 30min Imbalance Price*
€ 487.19
Max 30min Imbalance Price*
-€ 26.03
Min 30min Imbalance Price*
73.76
Max Net Imbalance Volume*
-102.24
Min Net Imbalance Volume*

Source: * SEMO

● Net Imbalance Volume* ● 30 Minute Imbalance Settlement Price*

Weekly Interconnection Summary - Week Commencing 16 December 2024



135,101.00
 Weekly MOYLE (MW) Import*
-34,394.00
 Weekly MOYLE (MW) Export*
100,707.00
 Weekly MOYLE (MW) NET*
118,432.00
 Weekly EWIC (MW) Import*
-28,080.00
 Weekly EWIC (MW) Export*
90,352.00
 Weekly EWIC (MW) NET*

Sources:
 * EirGrid
 ** SEMO, EPEX & Nordpool

Weekly Wind Capacity Summary - Week Commencing 16 December 2024



4412
Max Actual Wind (MW)*
720
Min Actual Wind (MW)*
5478
Max Forecast Wind (MW)*
539
Min Forecast Wind (MW)*

Sources:
* EirGrid

● 15 Minute Forecast Wind (MW)* ● 15 Minute Actual Wind (MW)*