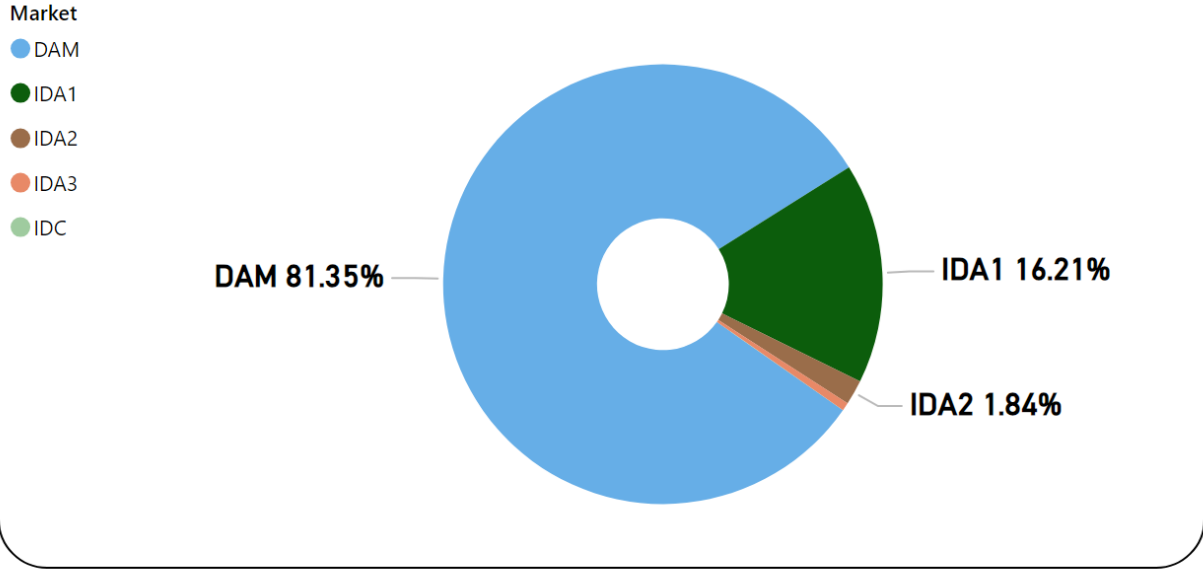


# MMU Weekly Market Summary Report

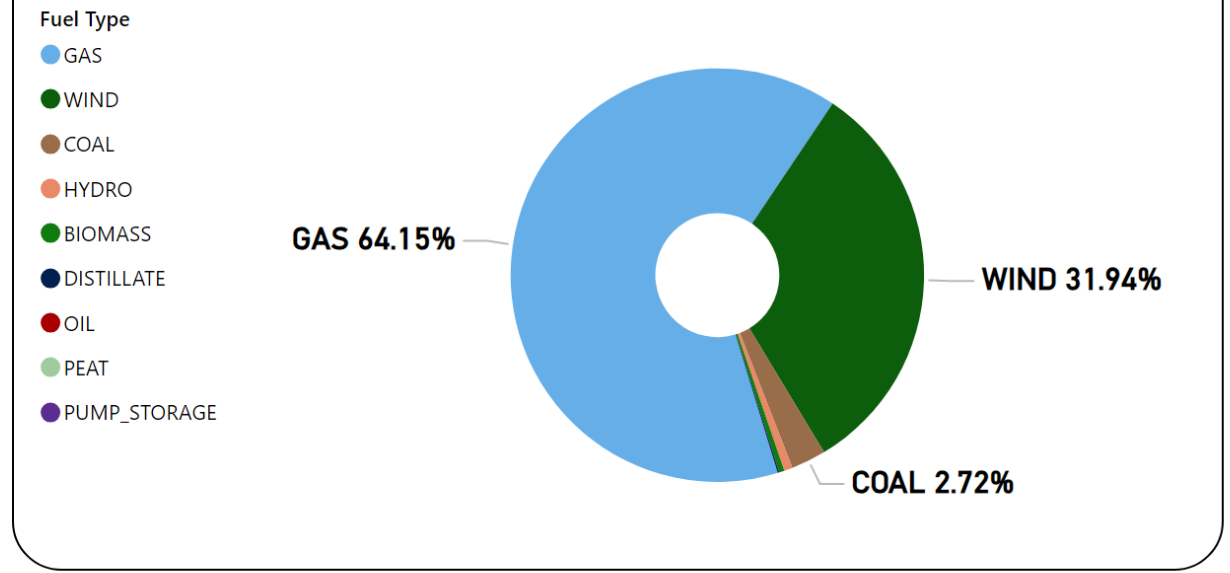
## - Week Commencing 26 August 2024

**Weekly Volume by Market**



Source: SEMO PX

**Weekly Fuel Mix**



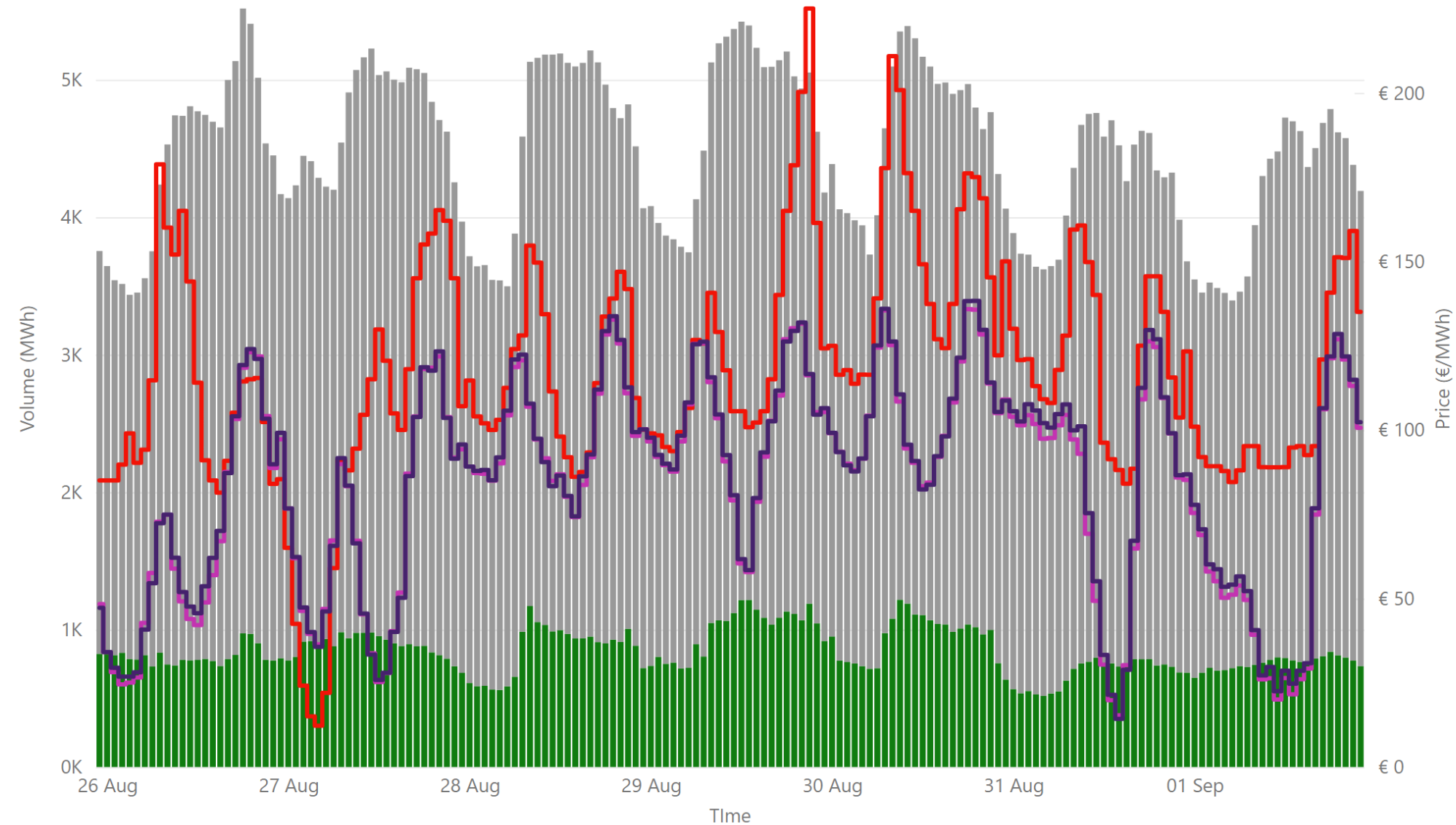
Source: SEMO PX

Summary Table

Date	Daily System Demand (MWh)*	Daily DAM Price (€/MWh)**	Daily Actual Wind (MWh)*	Daily Average Gas Price (p/th)***	Daily Average Coal Price (€/t)***	Daily Average Carbon Price (€/t)***
26 August 2024	108,146.75	111.30	39,834.75	86.70	120.40	70.50
27 August 2024	109,070.75	98.91	48,078.50	90.10	121.00	70.77
28 August 2024	109,116.75	116.66	34,654.25	92.90	121.75	69.84
29 August 2024	107,818.75	128.06	25,795.50	91.75	121.30	70.22
30 August 2024	106,750.75	149.07	5,308.00	94.05	121.70	69.40
31 August 2024	97,020.50	122.26	26,999.00	94.05	121.70	69.40
01 September 2024	98,850.25	106.89	22,993.25	94.05	121.70	69.40

Sources: \* EirGrid \*\* SEMO PX \*\*\* Oil Market Journal

# Weekly Day Ahead Market Summary - Week Commencing 26 August 2024



€ 117.71  
 Weekly Average SEM DAM Price\*

€ 84.25  
 Weekly Average GB EPEX Price\*\*

€ 85.37  
 Weekly Average GB Nordpool Pri...

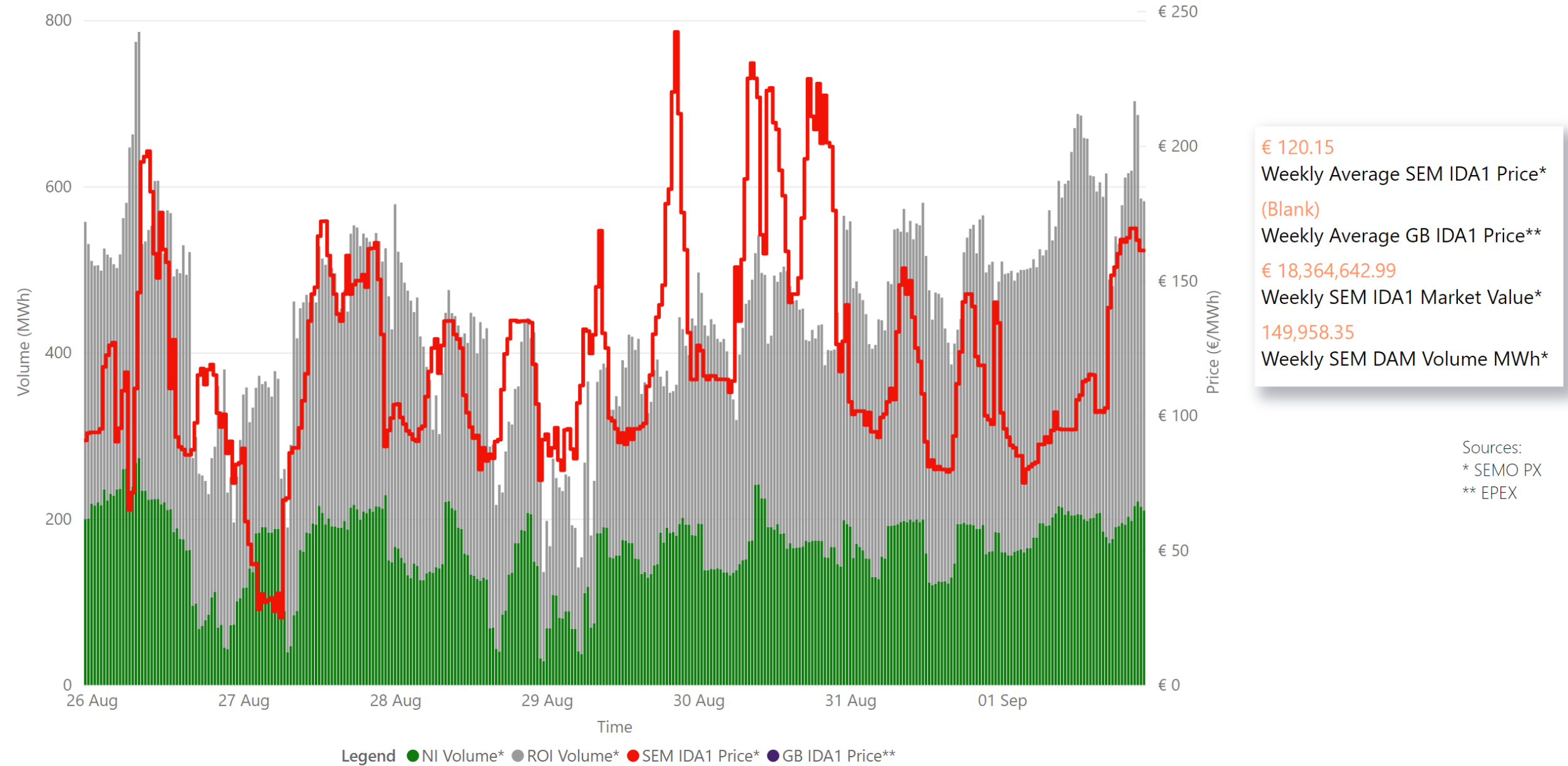
€ 89,743,982.91  
 Weekly SEM DAM Market Value\*

752,626.00  
 Weekly SEM DAM Volume MWh\*

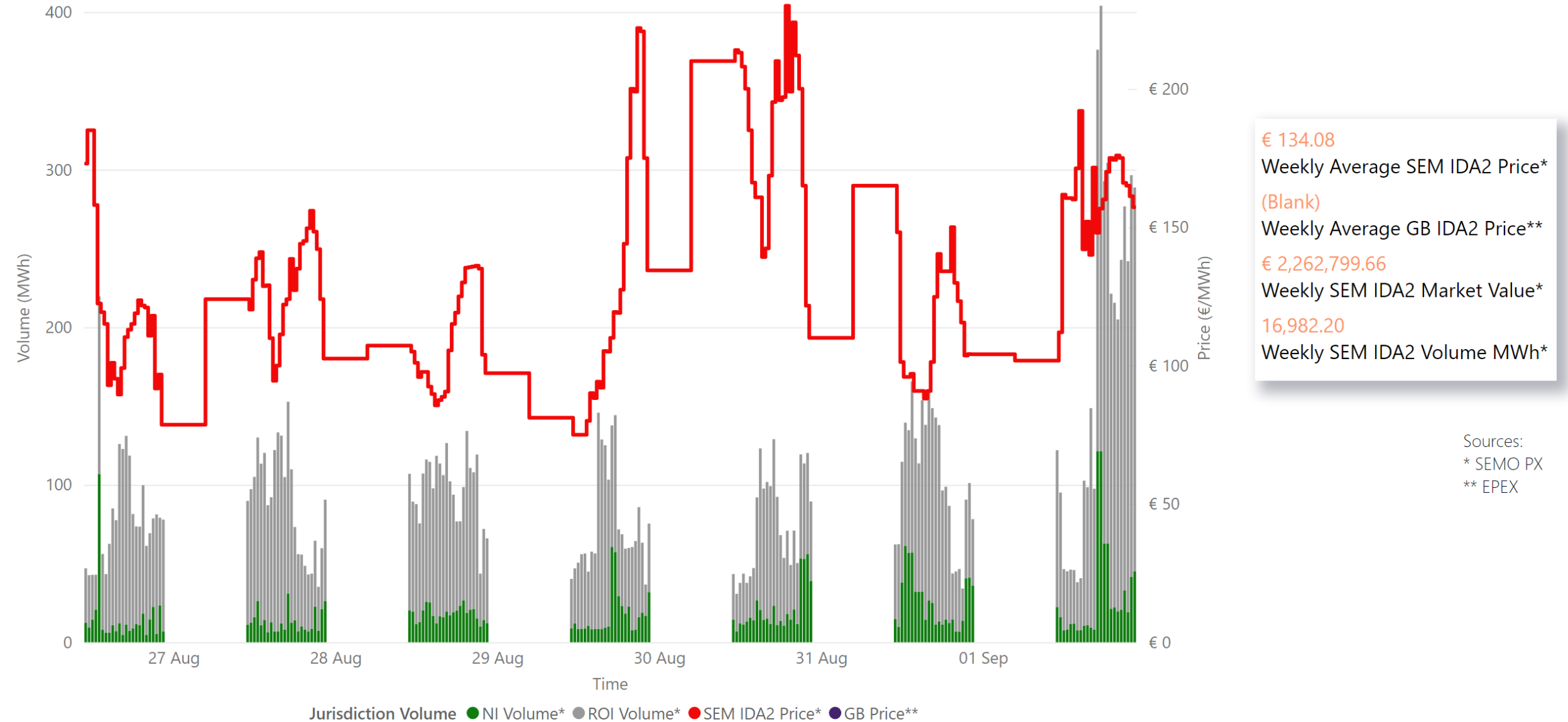
Sources:  
 \* SEMO PX  
 \*\* EPEX  
 \*\*\* Nordpool

Legend ● NI Volume\* ● ROI Volume\* ● SEM DAM Price\* ● GB EPEX DAM Price\*\* ● GB Nordpool DAM Price\*\*\*

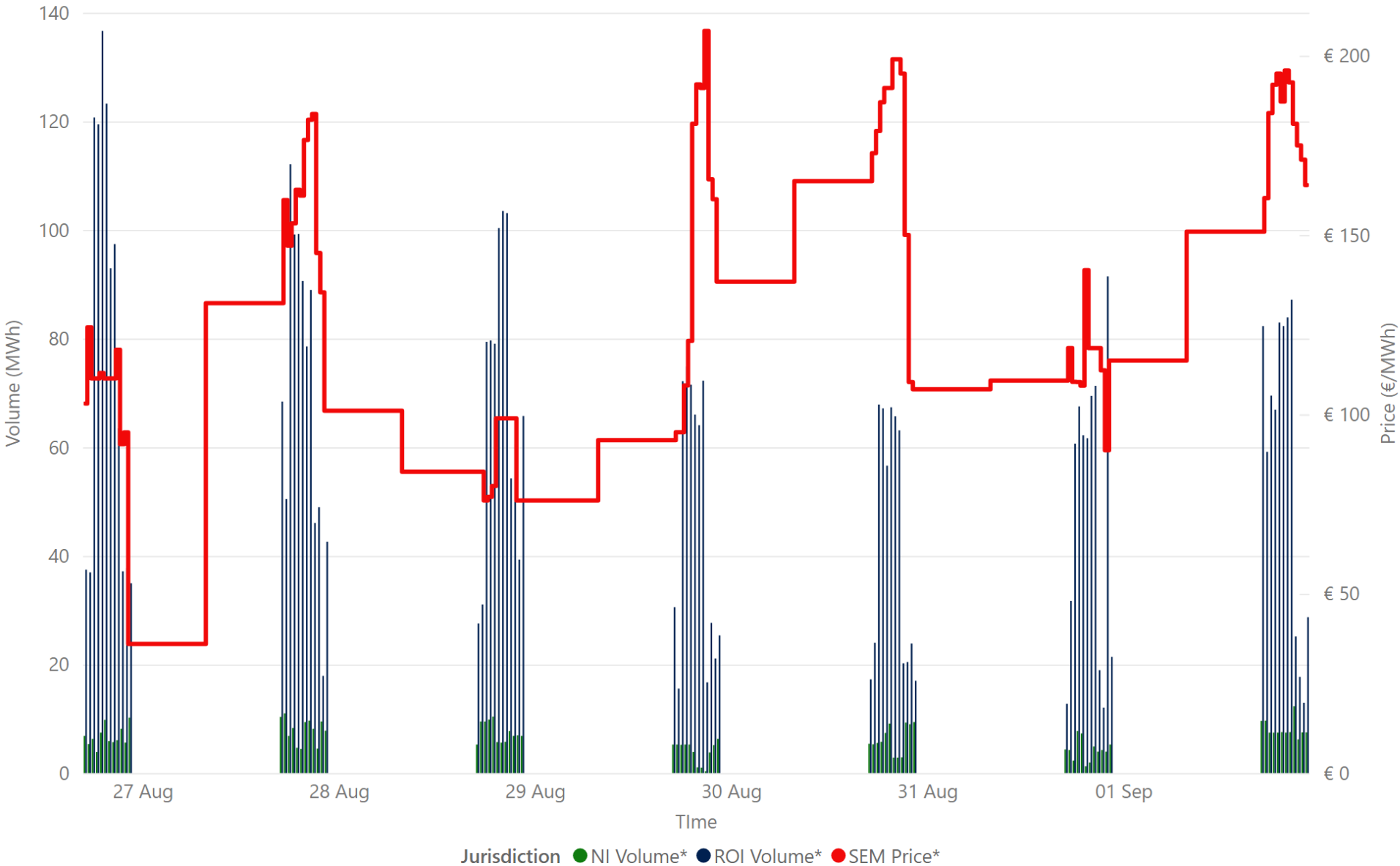
# Weekly Intraday Auction 1 Summary - Week Commencing 26 August 2024



# Weekly Intraday Auction 2 Summary - Week Commencing 26 August 2024



# Weekly Intraday Auction 3 Summary - Week Commencing 26 August 2024



€ 135.94  
Weekly Average SEM IDA3 Price\*

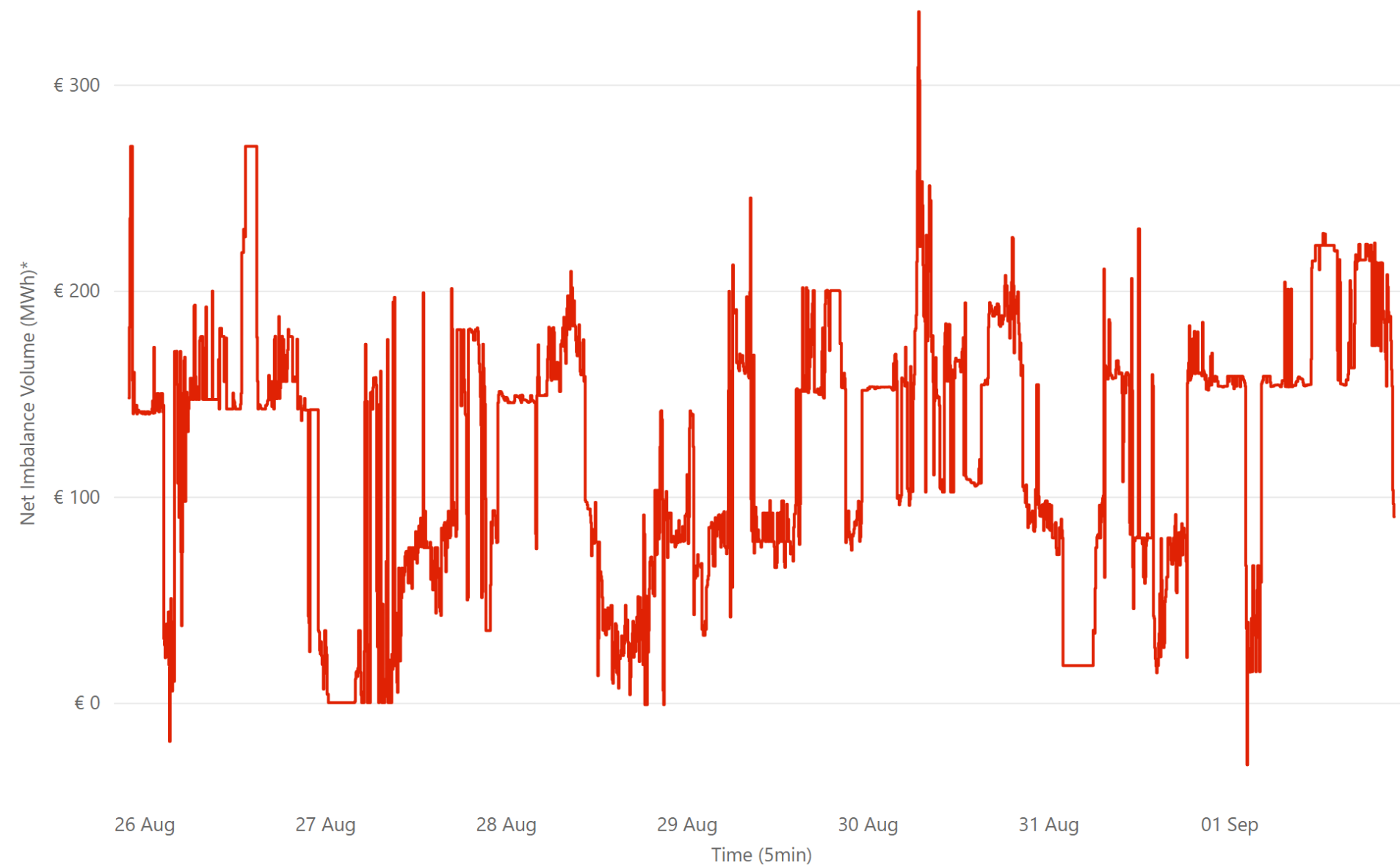
€ 742,433.69  
Weekly SEM IDA3 Market Value\*

5,489.85  
Weekly SEM IDA3 Volume MWh\*

Source: \* SEMO PX



# Weekly Balancing Market 5 Minute Summary - Week Commencing 26 August 2024



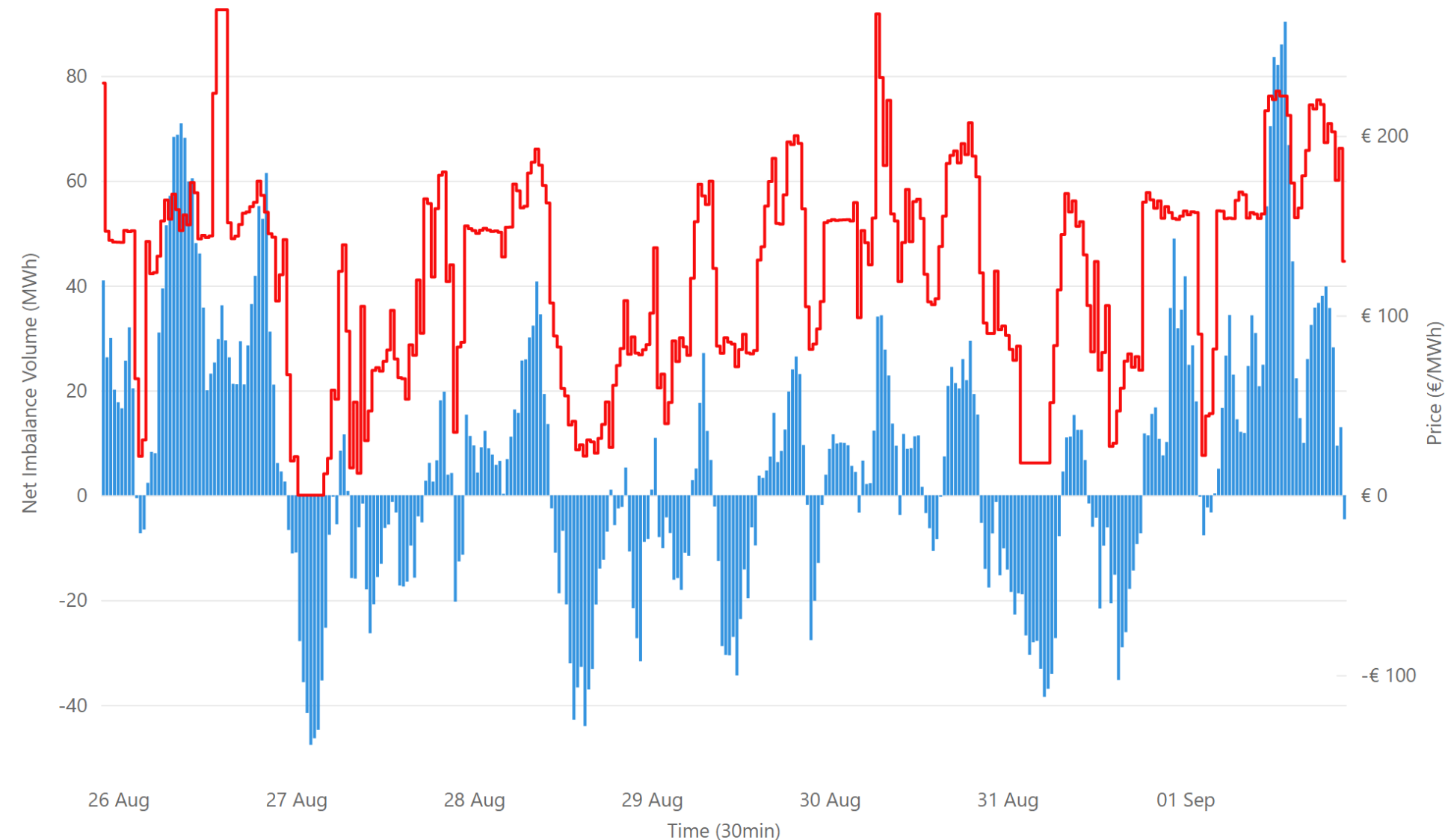
€ 122.60  
Ave 5min Imbalance Price\*

-€ 30.11  
Min 5min Imbalance Price\*

€ 335.31  
Max 5min Imbalance Price\*

Source: \* SEMO

# Weekly Balancing Market 30 Minute Summary - Week Commencing 26 August 2024



€ 122.60
Ave 30min Imbalance Price*
€ 270.00
Max 30min Imbalance Price*
€ 0.00
Min 30min Imbalance Price*
90.31
Max Net Imbalance Volume*
-47.61
Min Net Imbalance Volume*

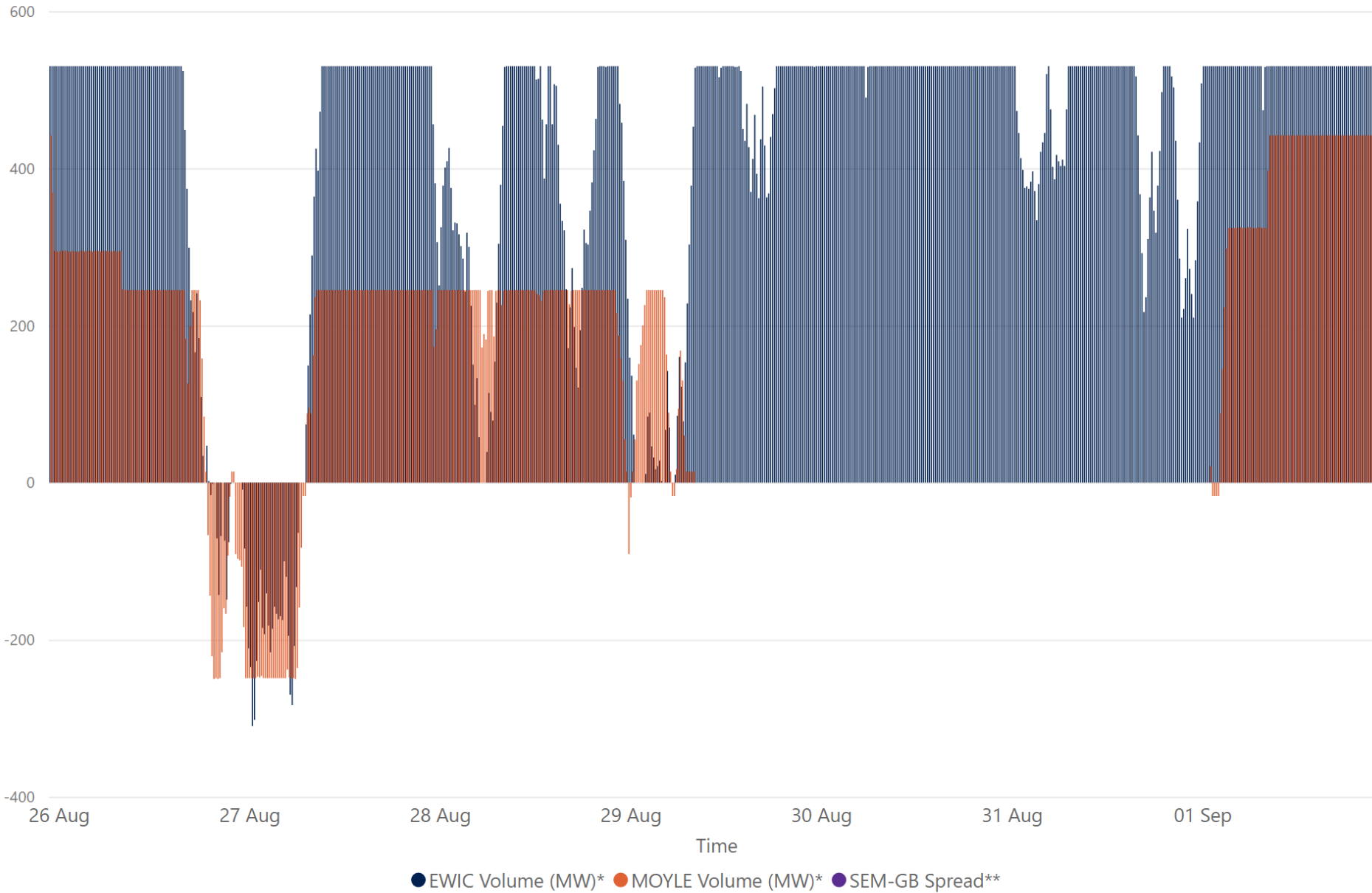
Source: \* SEMO

● Net Imbalance Volume\* ● 30 Minute Imbalance Settlement Price\*



# Weekly Interconnection Summary - Week Commencing

26 August 2024



96,145.00  
Weekly MOYLE (MW) Import\*

-9,843.00  
Weekly MOYLE (MW) Export\*

86,302.00  
Weekly MOYLE (MW) NET\*

283,511.00  
Weekly EWIC (MW) Import\*

-5,718.00  
Weekly EWIC (MW) Export\*

277,793.00  
Weekly EWIC (MW) NET\*

Sources:  
\* EirGrid  
\*\* SEMO, EPEX & Nordpool

# Weekly Wind Capacity Summary - Week Commencing 26 August 2024



**3328**  
Max Actual Wind (MW)\*

**37**  
Min Actual Wind (MW)\*

**4425**  
Max Forecast Wind (MW)\*

**58**  
Min Forecast Wind (MW)\*

Sources:  
\* EirGrid

● 15 Minute Forecast Wind (MW)\* ● 15 Minute Actual Wind (MW)\*